



**record-usa**  
4324 PHIL HARGETT CT.  
MONROE, NC 28110  
(704) 289-9212

JOB NAME: \_\_\_\_\_

LOCATION: \_\_\_\_\_

**AUTOMATIC FOLDING DOOR SYSTEM**

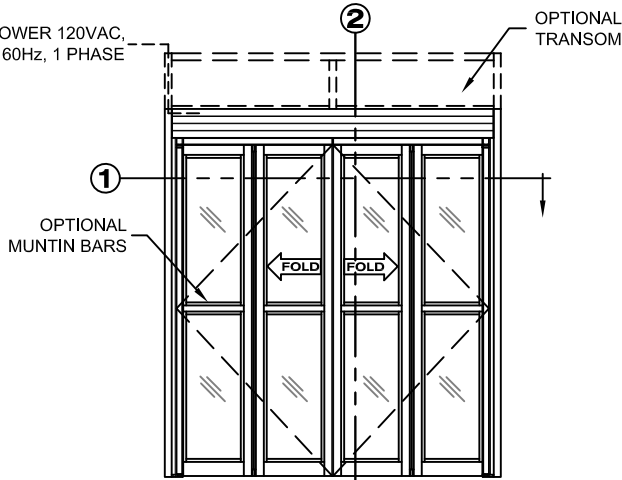
SERIES: 4600 SURFACE APPLIED FOLDING DOORS

MODEL: 4601 (DUAL)

TYPE: OUTFOLD / BREAK OUT

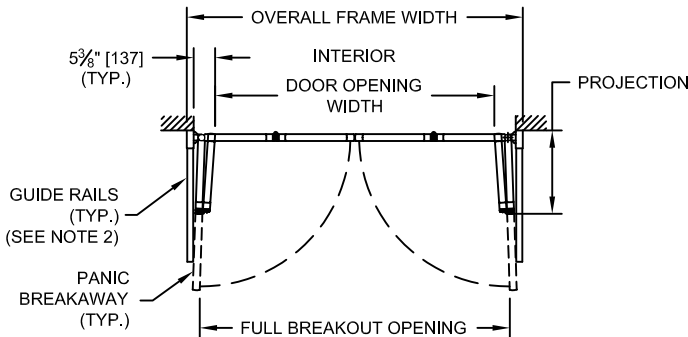
PAGE 45-2.04

POWER 120VAC,  
15A, 60Hz, 1 PHASE



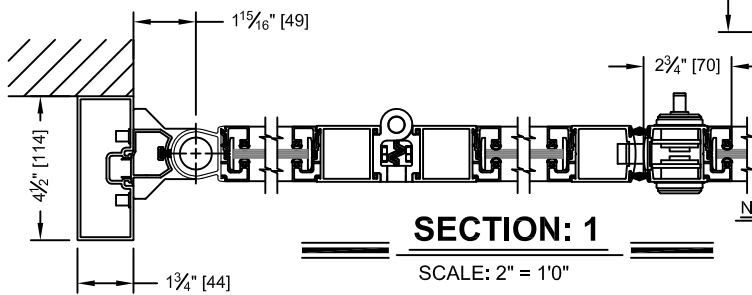
**ELEVATION VIEW**

SCALE: 1/4" = 1'0"



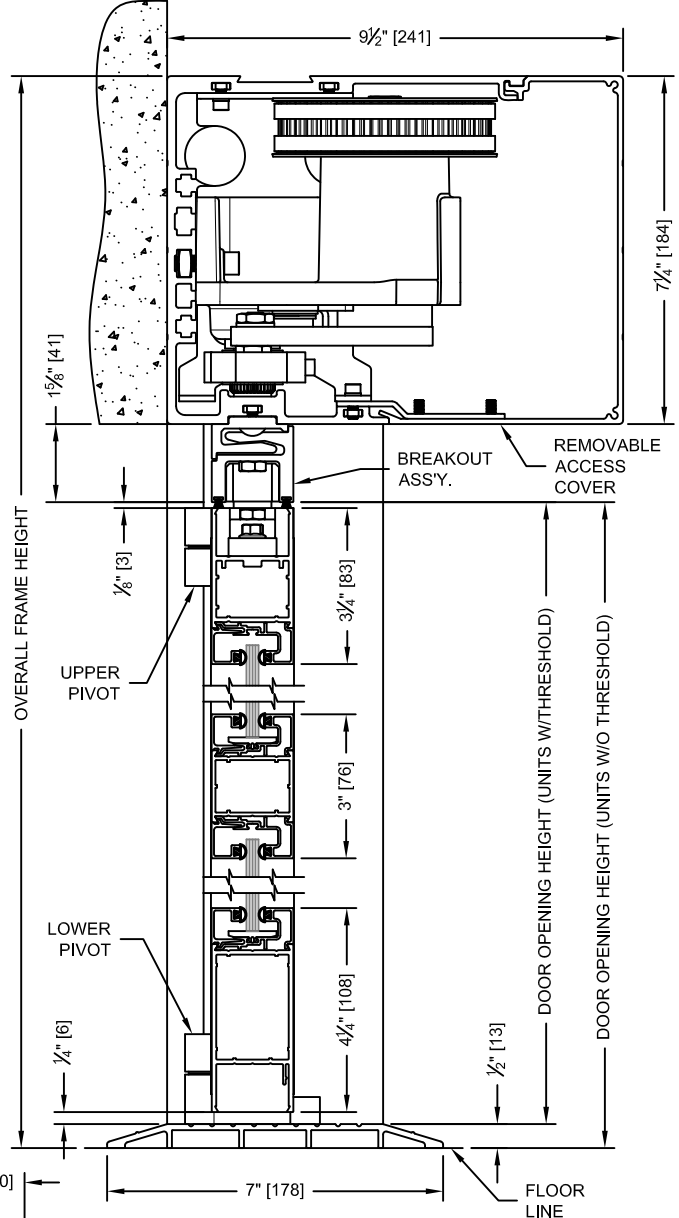
**PLAN VIEW**

SCALE: 1/4" = 1'0"



**SECTION: 1**

SCALE: 2" = 1'0"



**SECTION: 2**

SCALE: 1/4 SIZE

- NOTES:
1. See sheets 45-2.05 thru 45-2.08 for optional muntins, bottom rails, glazing variations, thresholds, transoms & control panel options.
  2. Folding doors must comply with the requirements of ANSI/BHMA A156.10 for public access.

**DIMENSIONS FOR STANDARD PACKAGES**

OVERALL FRAME WIDTH	DOOR OPENING WIDTH	OVERALL FRAME HEIGHT	DOOR OPENING HEIGHT			FULL BREAKOUT OPENING	PROJECTION
			UNITS W/O THRESHOLD	UNITS W 1/4" THRESHOLD	UNITS W 1/2" THRESHOLD		
60 (1524)	45-3/4 (1162)	92 (2337)	83-1/8 (2111)	82-7/8 (2105)	82-5/8 (2099)	51 (1295)	14-7/8 (378)
72 (1829)	57-3/4 (1467)	92 (2337)	83-1/8 (2111)	82-7/8 (2105)	82-5/8 (2099)	63 (1600)	17-7/8 (454)
84 (2134)	69-3/4 (1772)	92 (2337)	83-1/8 (2111)	82-7/8 (2105)	82-5/8 (2099)	75 (1905)	20-7/8 (530)
96 (2438)	81-3/4 (2076)	92 (2337)	83-1/8 (2111)	82-7/8 (2105)	82-5/8 (2099)	87 (2210)	23-7/8 (606)

Measurements given in inches (millimeters).