



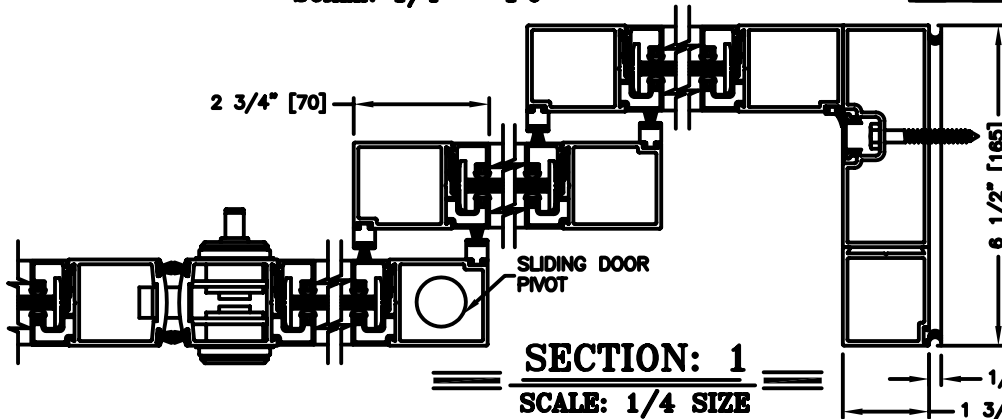
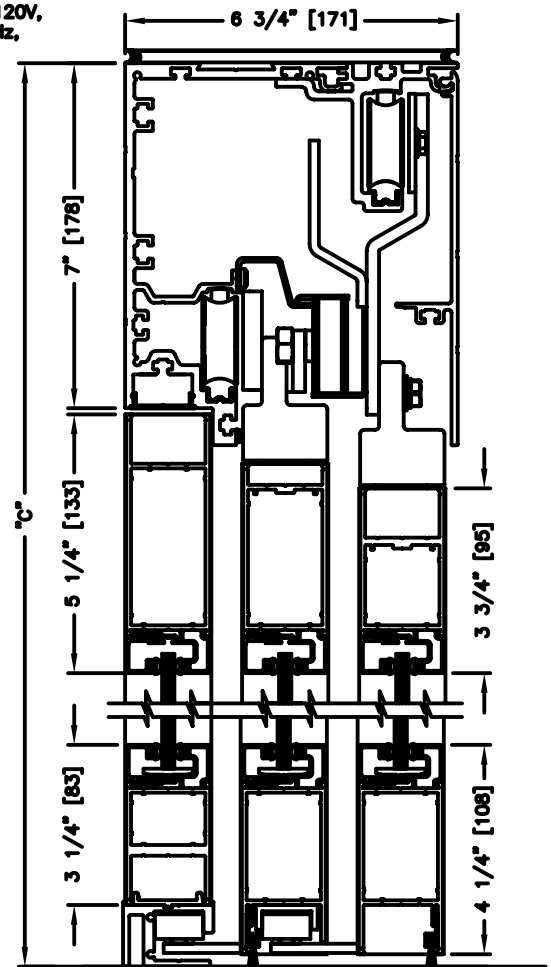
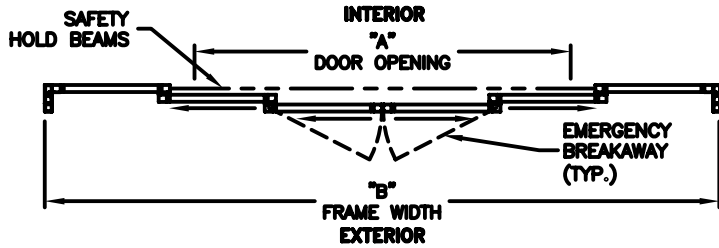
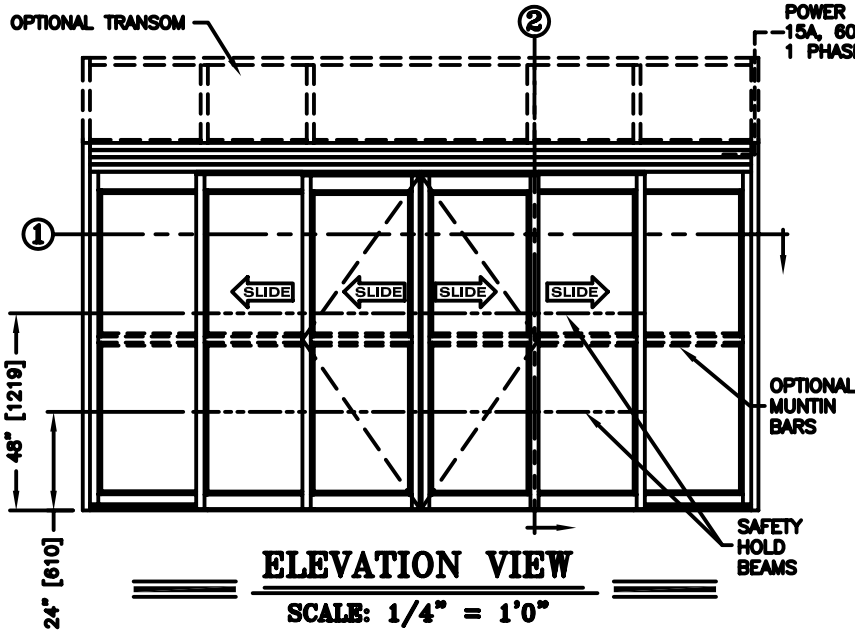
**record-usa**  
4910 STARCREST DR.  
MONROE, NC 28110  
(704) 289 - 9212

JOB NAME: \_\_\_\_\_

LOCATION: \_\_\_\_\_

SERIES 5100 AUTOMATIC SLIDING DOORS

TYPE: 5121-1, 0-X-SX-SX-X-0,  
BI-PART TELESCOPE PAGE 51-2.21



FLOOR LINE  
**SECTION: 2**  
SCALE: 1/4 SIZE

- NOTES:**
1. See sheets 51-2.86 thru 51-2.91 for optional muntins, bottom rails, transoms, glazing variations, bottom guides & thresholds.

<b>DIMENSIONS FOR STANDARD NARROW STILE PACKAGES</b>					
DOOR OPENING "A"	STD. PACKAGE WIDTH "B"	STD. PACKAGE HEIGHT "C" W OR W/O THRESHOLD	DOOR OPENING HEIGHT W/ THRESHOLD	DOOR OPENING HEIGHT W/O THRESHOLD	MAX. OPENING MANUALLY
43-3/4 (1111)	96 (2438)	91 (2311)	82-3/4 (2102)	83-1/4 (2115)	50-7/8 (1292)
51-3/4 (1314)	108 (2743)	91 (2311)	82-3/4 (2102)	83-1/4 (2115)	58-7/8 (1495)
59-3/4 (1518)	120 (3048)	91 (2311)	82-3/4 (2102)	83-1/4 (2115)	66-7/8 (1699)
75-3/4 (1924)	144 (3658)	91 (2311)	82-3/4 (2102)	83-1/4 (2115)	82-7/8 (2105)
91-3/4 (2330)	168 (4267)	91 (2311)	82-3/4 (2102)	83-1/4 (2115)	98-7/8 (2511)

Masonry Opening is 1/4" (6) per side larger and 1/4" taller than package dimensions.  
Measurements given in inches (millimeters).