



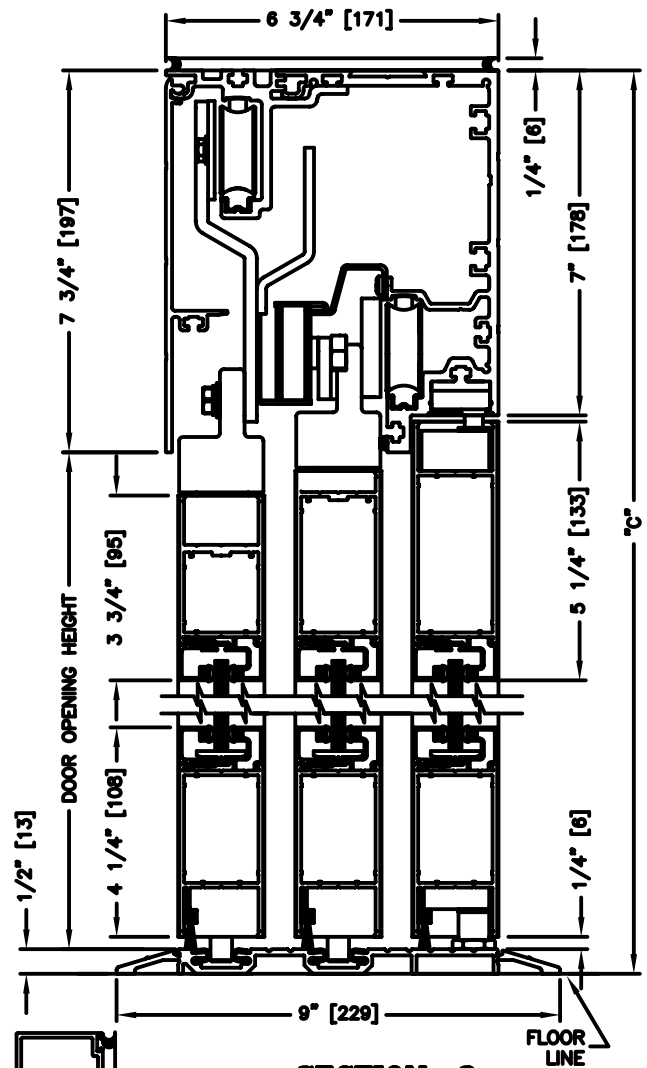
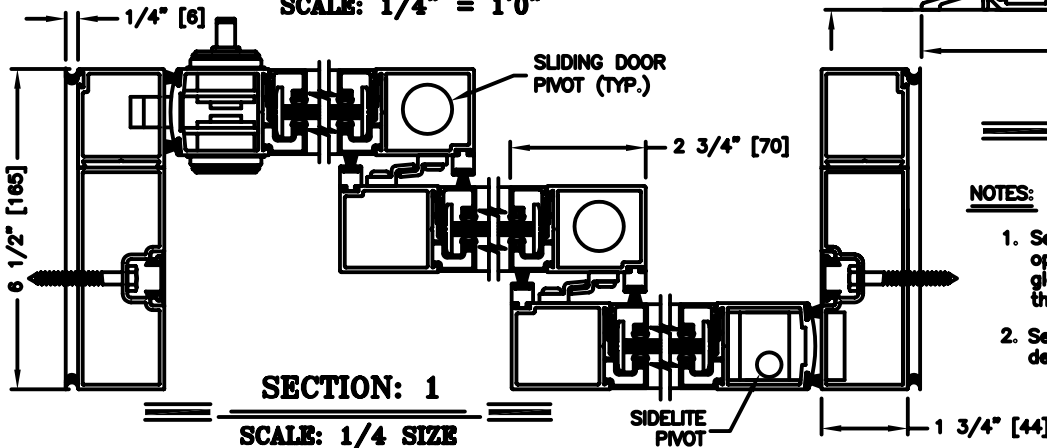
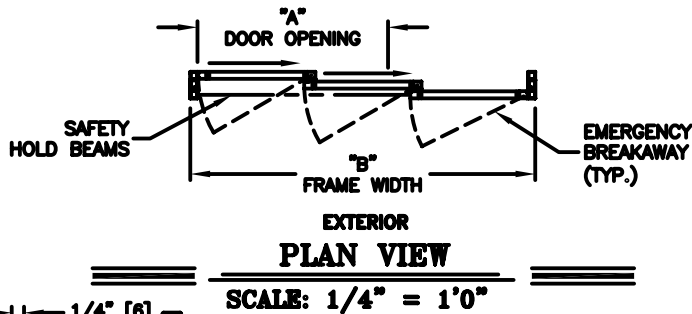
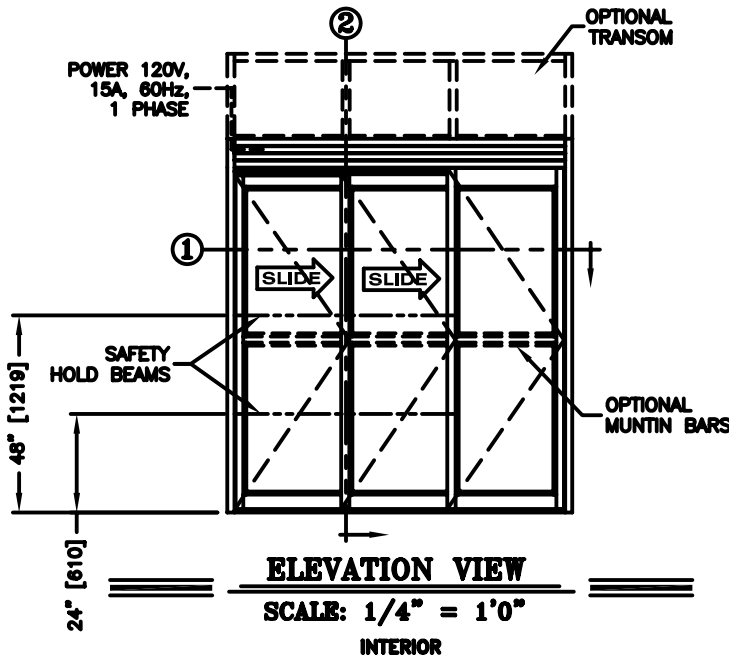
record-usa
4910 STARCREST DR.
MONROE, NC 28110
(704) 289 - 9212

JOB NAME: _____
LOCATION: _____

SERIES 5100 AUTOMATIC SLIDING DOORS

TYPE: 5123-1, SX-SX-SO, R.H. TELESCOPE

PAGE 51-2.23



NOTES:

1. See sheets 51-2.86 thru 51-2.91 for optional muntins, bottom rails, transoms, glazing variations, bottom guides & thresholds.
2. See sheet 51-2.92 for additional details of recessed pin guide.

DIMENSIONS FOR STANDARD NARROW STILE PACKAGES

DOOR OPENING "A"	STD. PACKAGE WIDTH "B"	STD. PACKAGE HEIGHT "C" W OR W/O THRESHOLD	DOOR OPENING HEIGHT W/ THRESHOLD	DOOR OPENING HEIGHT W/O THRESHOLD	MAX. OPENING MANUALLY
44-3/4 (1137)	84 (2134)	91 (2311)	82-3/4 (2102)	83-1/4 (2115)	71-1/2 (1816)
52-3/4 (1340)	96 (2438)	91 (2311)	82-3/4 (2102)	83-1/4 (2115)	83-1/2 (2121)
60-3/4 (1543)	108 (2743)	91 (2311)	82-3/4 (2102)	83-1/4 (2115)	95-1/2 (2426)
68-3/4 (1746)	120 (3048)	91 (2311)	82-3/4 (2102)	83-1/4 (2115)	107-1/2 (2731)
84-3/4 (2153)	144 (3658)	91 (2311)	82-3/4 (2102)	83-1/4 (2115)	131-1/2 (3340)

Masonry Opening is 1/4" (6) per side larger and 1/4" taller than package dimensions.
Measurements given in inches (millimeters).