

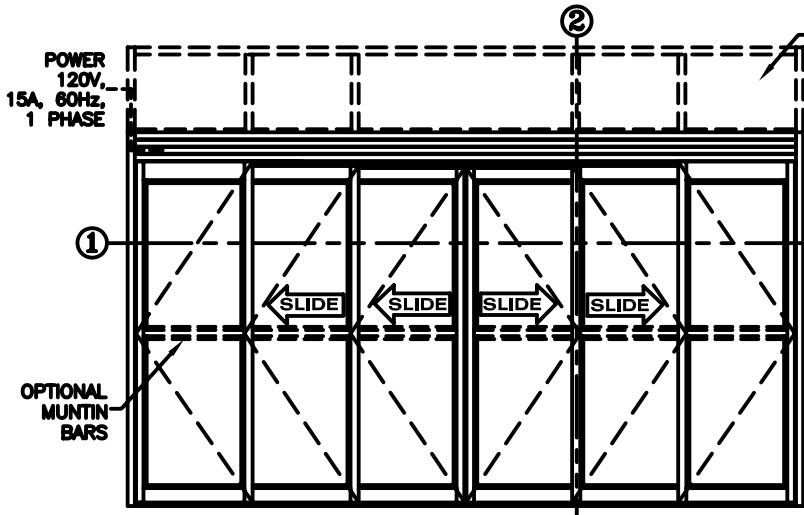


record-usa
4910 STARCREST DR.
MONROE, NC 28110
(704) 289 - 9212

JOB NAME: _____
LOCATION: _____

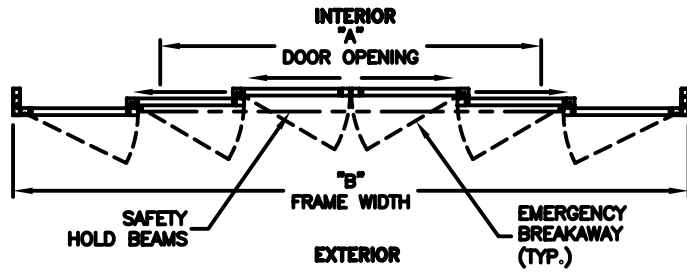
SERIES 5100 AUTOMATIC SLIDING DOORS

TYPE: 5124-1, S0-SX-SX-SX-SX-S0,
6-PANEL BI-PART TELESCOPE PAGE 51-2.24



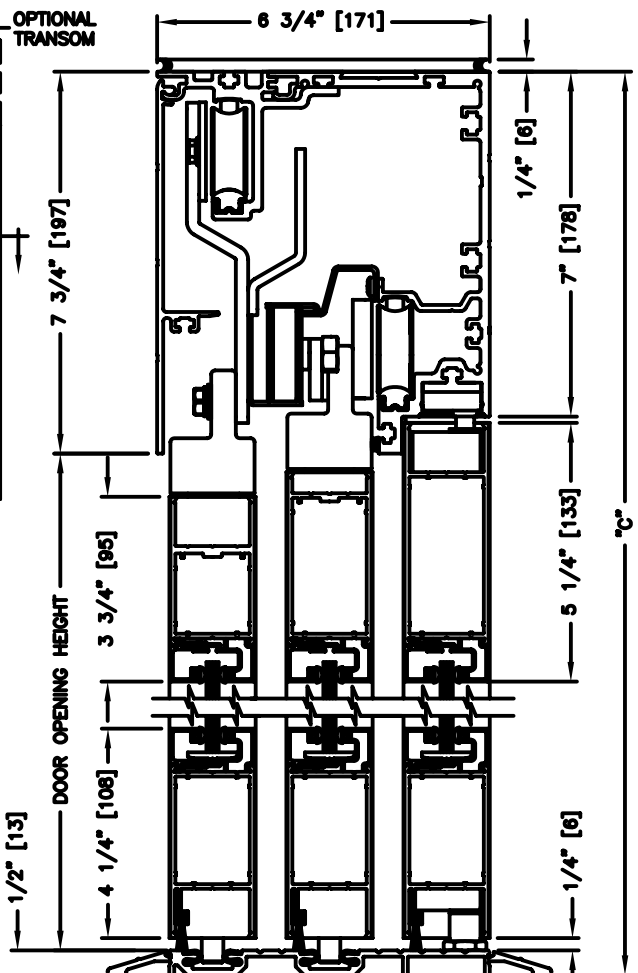
ELEVATION VIEW

SCALE: 1/4" = 1'0"



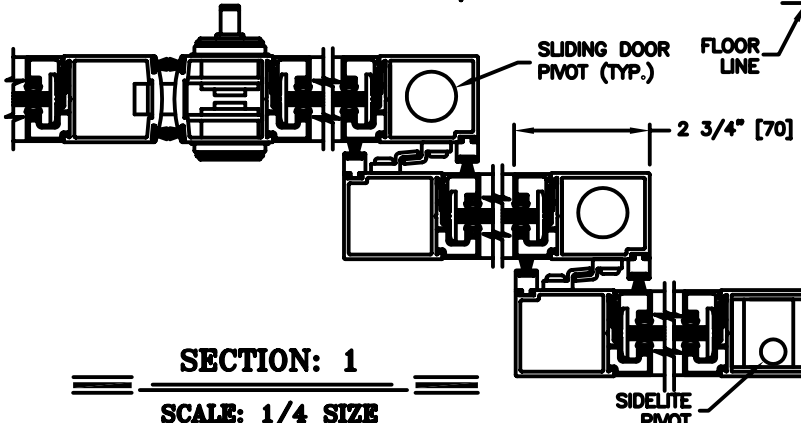
PLAN VIEW

SCALE: 1/4" = 1'0"



SECTION: 2

SCALE: 1/4 SIZE



SECTION: 1

SCALE: 1/4 SIZE

NOTES:

1. See sheets 51-2.86 thru 51-2.91 for optional muntins, bottom rails, transoms, glazing variations, bottom guides & thresholds.
2. See sheet 51-2.92 for additional details of recessed pin guide.

DIMENSIONS FOR STANDARD NARROW STILE PACKAGES

DOOR OPENING "A"	STD. PACKAGE WIDTH "B"	STD. PACKAGE HEIGHT "C" W OR W/O THRESHOLD	DOOR OPENING HEIGHT W/ THRESHOLD	DOOR OPENING HEIGHT W/O THRESHOLD	MAX. OPENING MANUALLY
43-3/4 (1111)	96 (2438)	91 (2311)	82-3/4 (2102)	83-1/4 (2115)	74-1/2 (1892)
51-3/4 (1314)	108 (2743)	91 (2311)	82-3/4 (2102)	83-1/4 (2115)	86-1/2 (2197)
59-3/4 (1518)	120 (3048)	91 (2311)	82-3/4 (2102)	83-1/4 (2115)	98-1/2 (2502)
75-3/4 (1924)	144 (3658)	91 (2311)	82-3/4 (2102)	83-1/4 (2115)	122-1/2 (3112)
91-3/4 (2330)	168 (4267)	91 (2311)	82-3/4 (2102)	83-1/4 (2115)	146-1/2 (3721)

Masonry Opening is 1/4" (6) per side larger and 1/4" taller than package dimensions.
Measurements given in inches (millimeters).