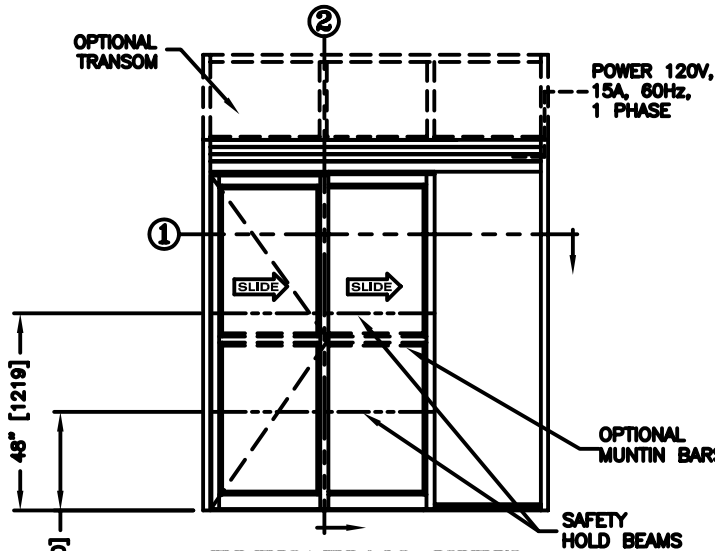




record-usa
4910 STARCREST DR.
MONROE, NC 28110
(704) 289 - 9212

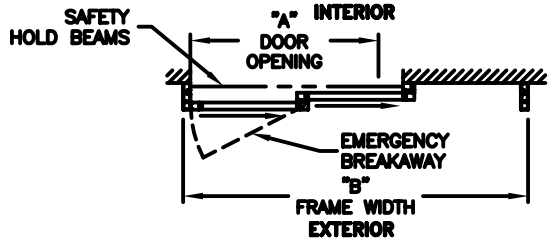
JOB NAME: _____
LOCATION: _____

SERIES 5100 AUTOMATIC SLIDING DOORS
TYPE: 5126-1, SX-X-P, R.H. TELESCOPE
PAGE 51-2.26



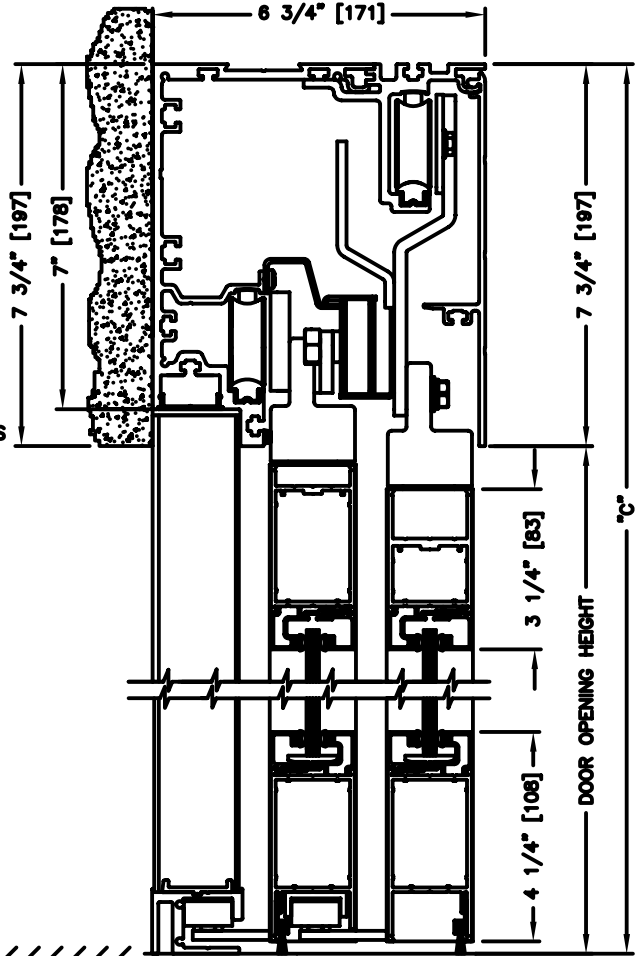
ELEVATION VIEW

SCALE: 1/4" = 1'0"



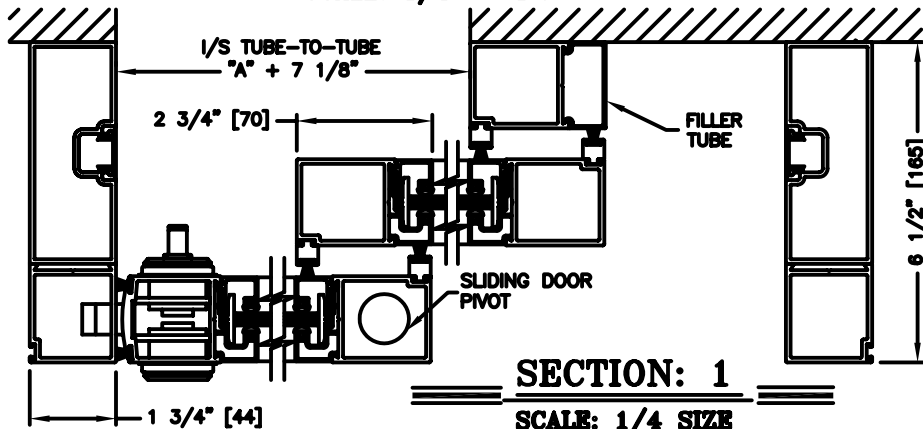
PLAN VIEW

SCALE: 1/4" = 1'0"



SECTION: 2

SCALE: 1/4 SIZE



SECTION: 1

SCALE: 1/4 SIZE

NOTES:

- See sheets 51-2.86 thru 51-2.91 for optional muntins, bottom rails, transoms, glazing variations, bottom guides & thresholds.

DIMENSIONS FOR STANDARD NARROW STILE PACKAGES

DOOR OPENING "A"	STD. PACKAGE WIDTH "B"	STD. PACKAGE HEIGHT "C" W OR W/O THRESHOLD	DOOR OPENING HEIGHT W/ THRESHOLD	DOOR OPENING HEIGHT W/O THRESHOLD	MAX. OPENING MANUALLY	I/S TUBE-TO-TUBE
44-3/4 (1137)	84 (2134)	91 (2311)	82-3/4 (2102)	83-1/4 (2115)	48-5/16 (1227)	51-7/8 (1318)
52-3/4 (1340)	96 (2438)	91 (2311)	82-3/4 (2102)	83-1/4 (2115)	56-5/16 (1430)	59-7/8 (1521)
60-3/4 (1543)	108 (2743)	91 (2311)	82-3/4 (2102)	83-1/4 (2115)	64-5/16 (1634)	67-7/8 (1724)
68-3/4 (1746)	120 (3048)	91 (2311)	82-3/4 (2102)	83-1/4 (2115)	72-5/16 (1837)	75-7/8 (1927)
84-3/4 (2153)	144 (3658)	91 (2311)	82-3/4 (2102)	83-1/4 (2115)	88-5/16 (2243)	91-7/8 (2334)

Masonry Opening is 1/4" (6) per side larger and 1/4" taller than package dimensions.
Measurements given in inches (millimeters).