



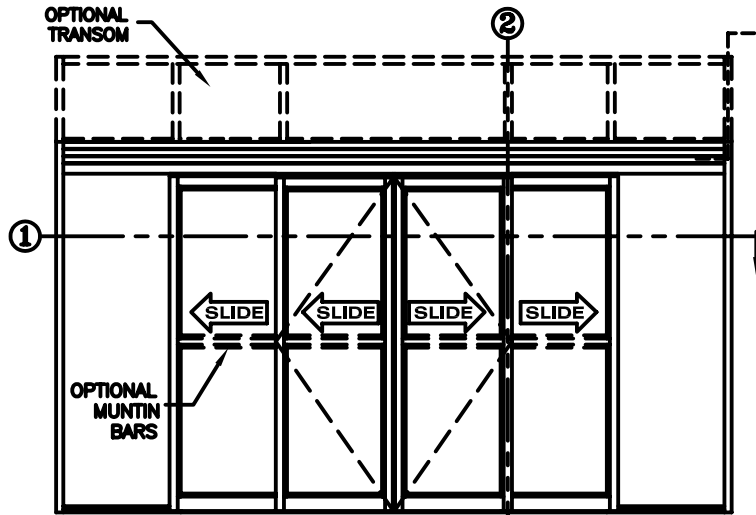
record-usa
4910 STARCREST DR.
MONROE, NC 28110
(704) 289 - 9212

JOB NAME: _____

LOCATION: _____

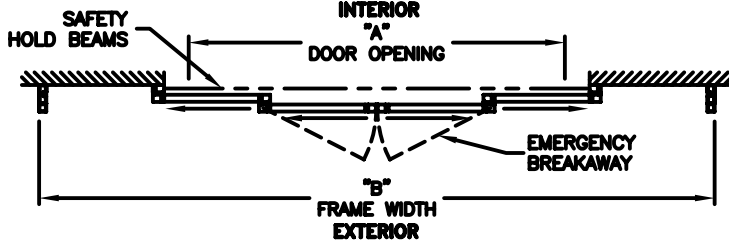
SERIES 5100 AUTOMATIC SLIDING DOORS

TYPE: 5127-1, P-X-SX-SX-X-P,
BI-PART TELESCOPE PAGE 51-2.27



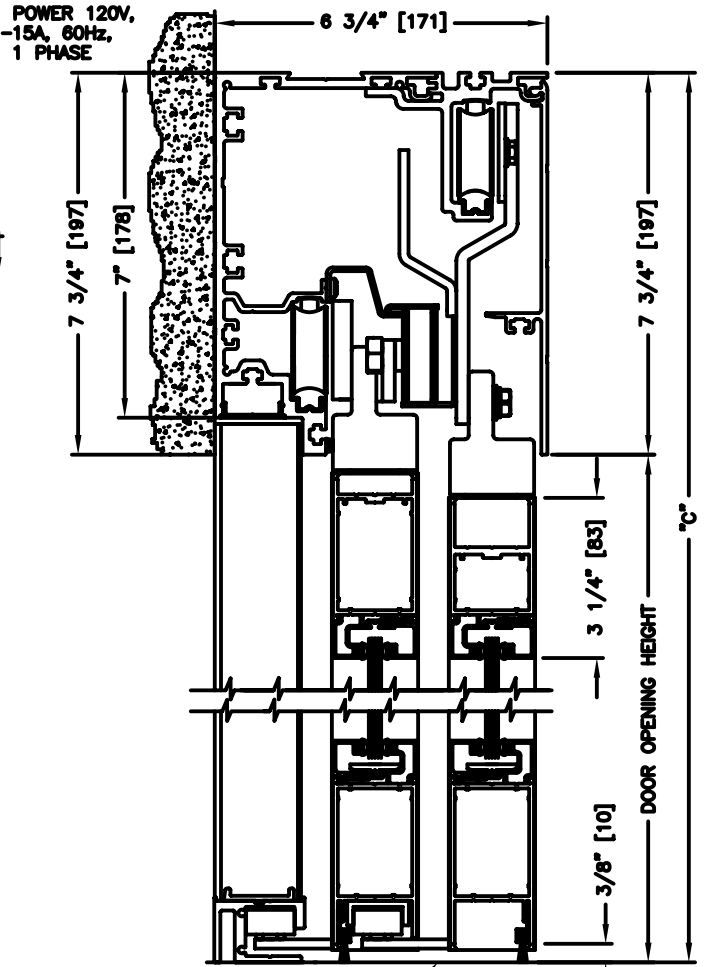
ELEVATION VIEW

SCALE: 1/4" = 1'0"



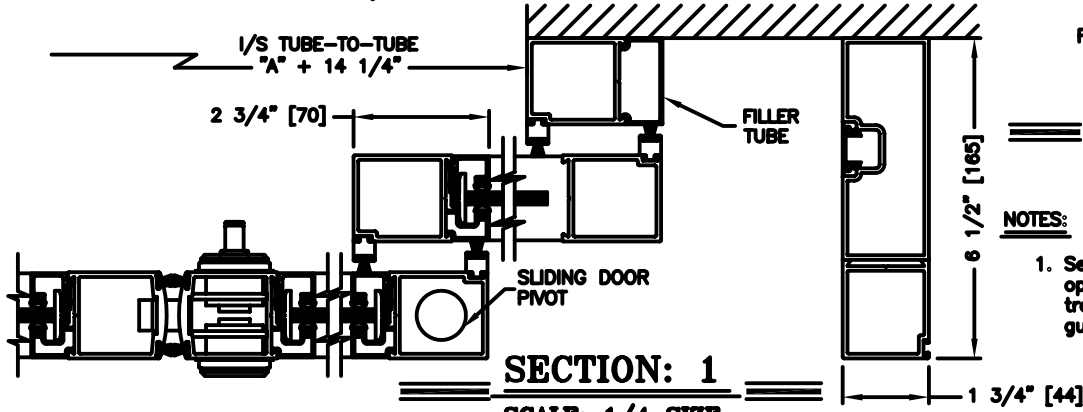
PLAN VIEW

SCALE: 1/4" = 1'0"



SECTION: 2

SCALE: 1/4 SIZE



SECTION: 1

SCALE: 1/4 SIZE

NOTES:

- See sheets 51-2.86 thru 51-2.91 for optional muntins, bottom rails, transoms, glazing variations, bottom guides & thresholds.

DIMENSIONS FOR STANDARD NARROW STILE PACKAGES

| DOOR OPENING "A" | STD. PACKAGE WIDTH "B" | STD. PACKAGE HEIGHT "C" W OR W/O THRESHOLD | DOOR OPENING HEIGHT W/ THRESHOLD | DOOR OPENING HEIGHT W/O THRESHOLD | MAX. OPENING MANUALLY | I/S TUBE-TO-TUBE |
|------------------|------------------------|--|----------------------------------|-----------------------------------|-----------------------|------------------|
| 43-3/4 (1111) | 96 (2438) | 91 (2311) | 82-3/4 (2102) | 83-1/4 (2115) | 50-7/8 (1292) | 58 (1473) |
| 51-3/4 (1314) | 108 (2743) | 91 (2311) | 82-3/4 (2102) | 83-1/4 (2115) | 58-7/8 (1495) | 66 (1676) |
| 59-3/4 (1518) | 120 (3048) | 91 (2311) | 82-3/4 (2102) | 83-1/4 (2115) | 66-7/8 (1699) | 74 (1880) |
| 75-3/4 (1924) | 144 (3658) | 91 (2311) | 82-3/4 (2102) | 83-1/4 (2115) | 82-7/8 (2105) | 90 (2286) |
| 91-3/4 (2330) | 168 (4267) | 91 (2311) | 82-3/4 (2102) | 83-1/4 (2115) | 98-7/8 (2511) | 106 (2692) |

Masonry Opening is 1/4" (6) per side larger and 1/4" taller than package dimensions.
Measurements given in inches (millimeters).