



record-usa
4910 STARCREST DR.
MONROE, NC 28110
(704) 289 - 9212

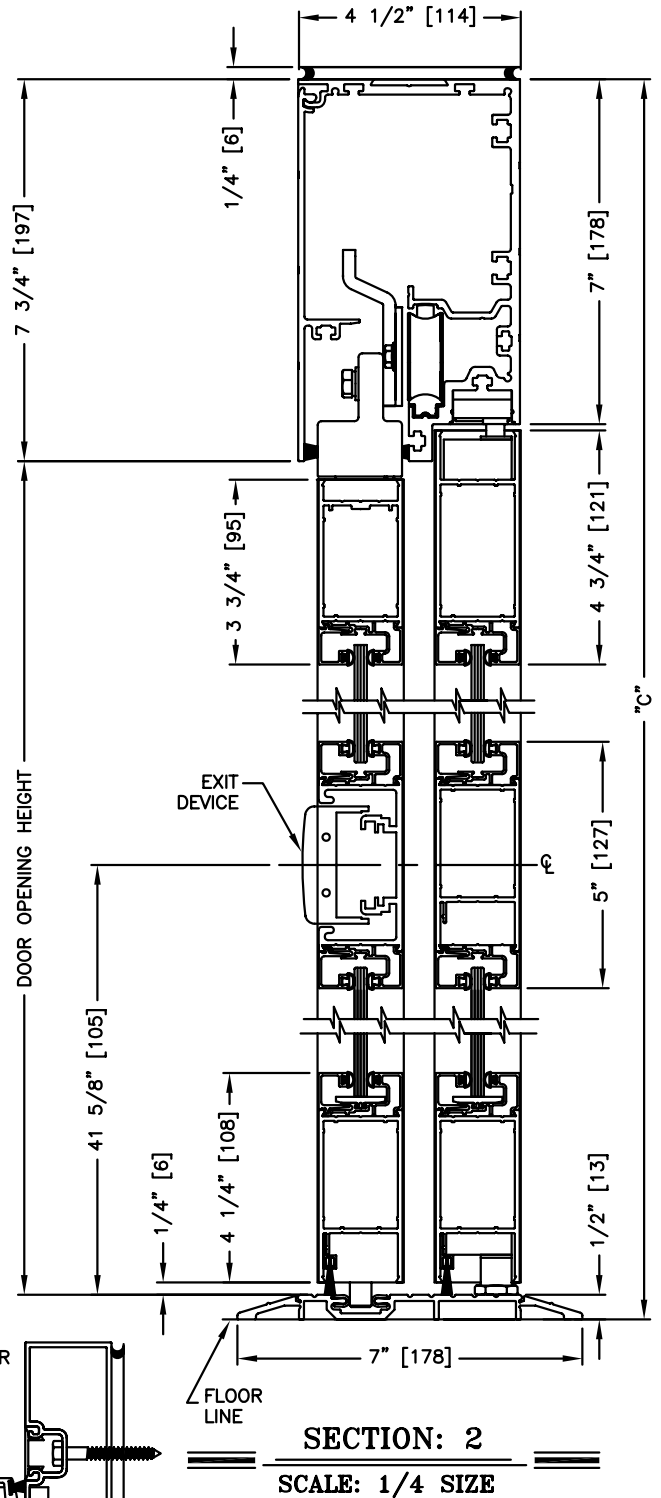
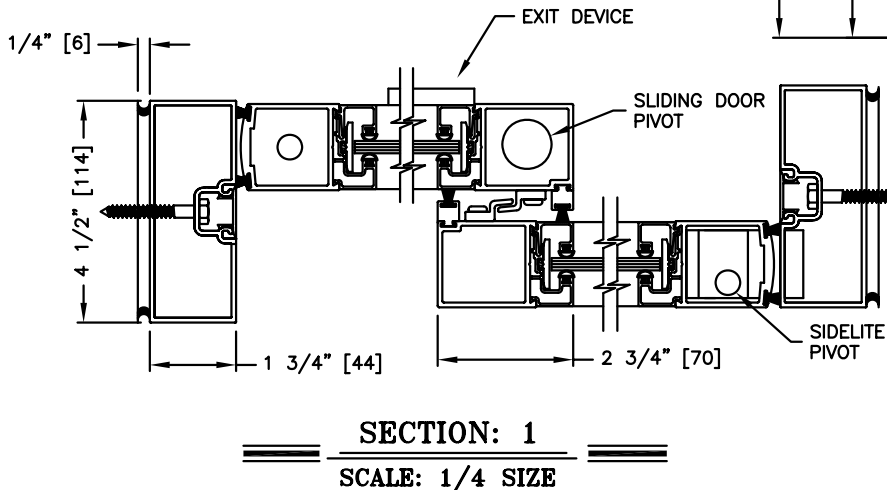
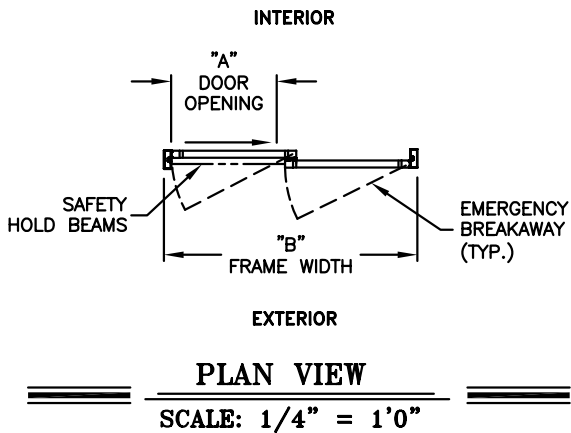
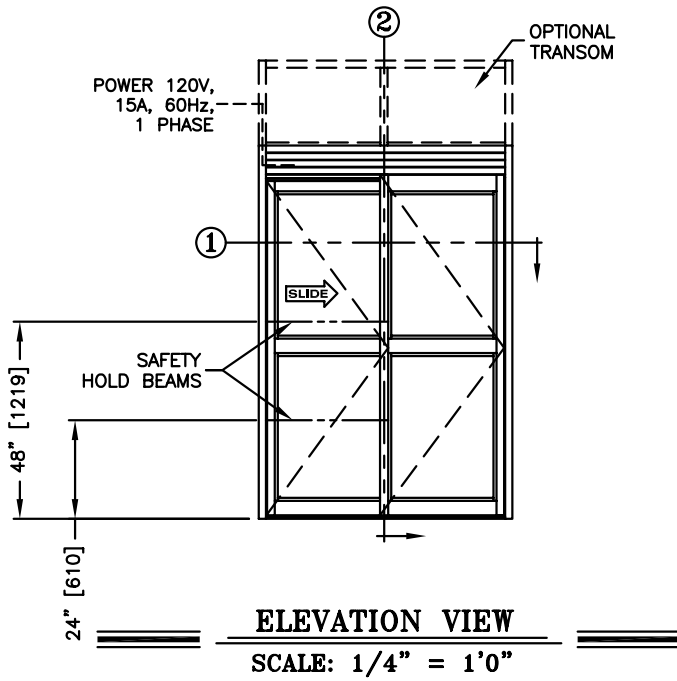
JOB NAME: _____

LOCATION: _____

SERIES 5100 AUTOMATIC SLIDING DOORS

TYPE; 5105-1, SX-SO, R.H. SINGLE
WITH SECURITY PACKAGE

PAGE 51-2.31



NOTES:

1. Security Package includes concealed vertical rod exit device on the sliding door and fail secure electric lock in the header.
2. See sheets 51-2.86 thru 51-2.91 for optional muntins, bottom rails, transoms, glazing variations, bottom guides & thresholds.
3. See sheet 51-2.05 for package size details.
4. See sheet 51-2.92 for additional details of recessed pin guide.