



record-usa
4910 STARCREST DR.
MONROE, NC 28110
(704) 289 - 9212

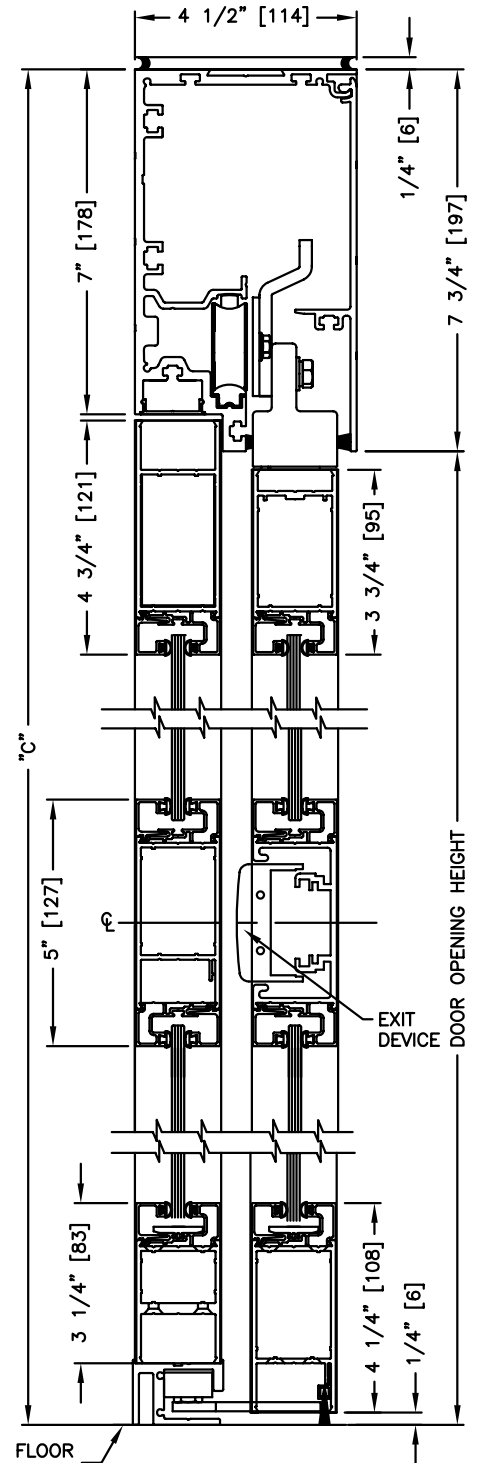
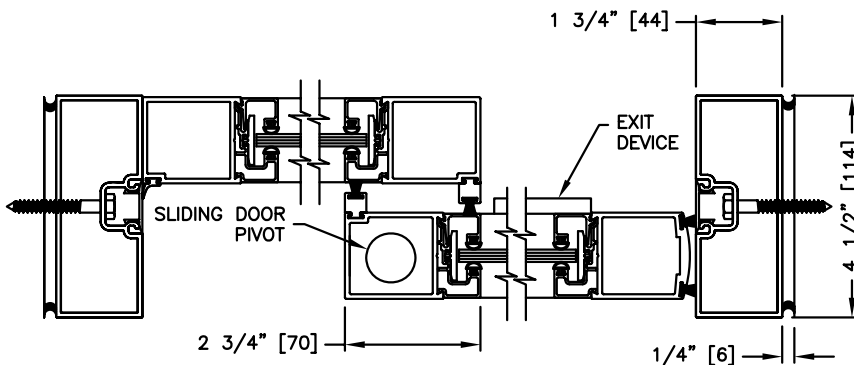
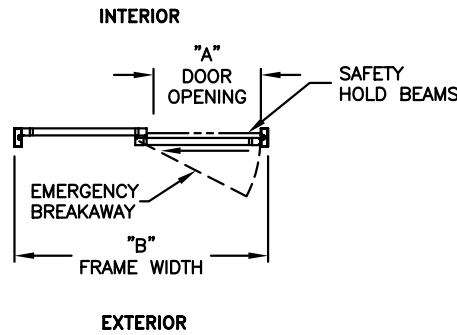
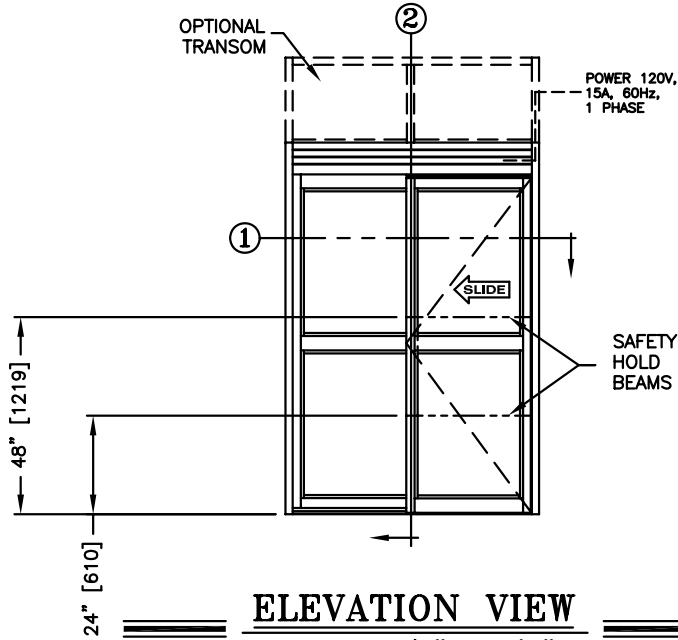
JOB NAME: _____

LOCATION: _____

SERIES 5100 AUTOMATIC SLIDING DOORS

TYPE: 5101-1, 0-SX, L.H. SINGLE
WITH SECURITY PACKAGE

PAGE 51-2.33



NOTES:

1. Security Package includes concealed vertical rod type exit device on the sliding door and fail secure electric lock in the header.
2. See sheets 51-2.86 thru 51-2.91 for optional muntins, bottom rails, transoms, glazing variations, bottom guides & thresholds.
3. See sheet 51-2.01 for package size details.