



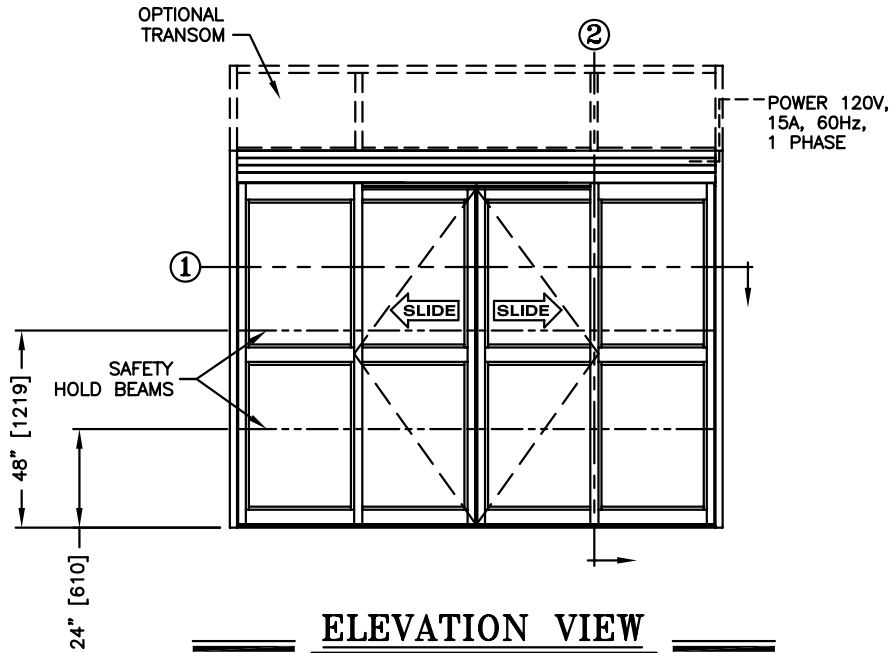
**record-usa**  
4910 STARCREST DR.  
MONROE, NC 28110  
(704) 289 - 9212

JOB NAME: \_\_\_\_\_

LOCATION: \_\_\_\_\_

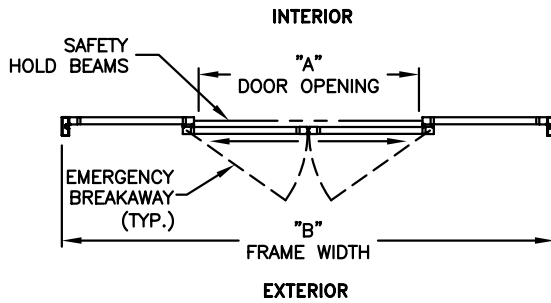
**SERIES 5100 AUTOMATIC SLIDING DOORS**

TYPE: 5103-1, 0-SX-SX-0, BI-PART  
WITH SECURITY PACKAGE PAGE 51-2.35



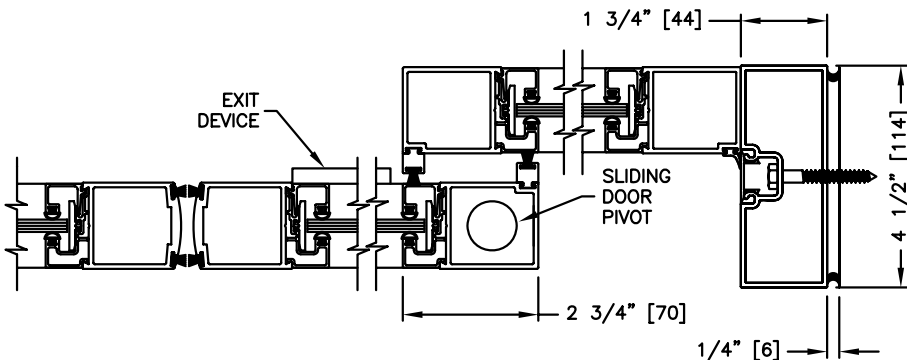
**ELEVATION VIEW**

SCALE: 1/4" = 1'0"



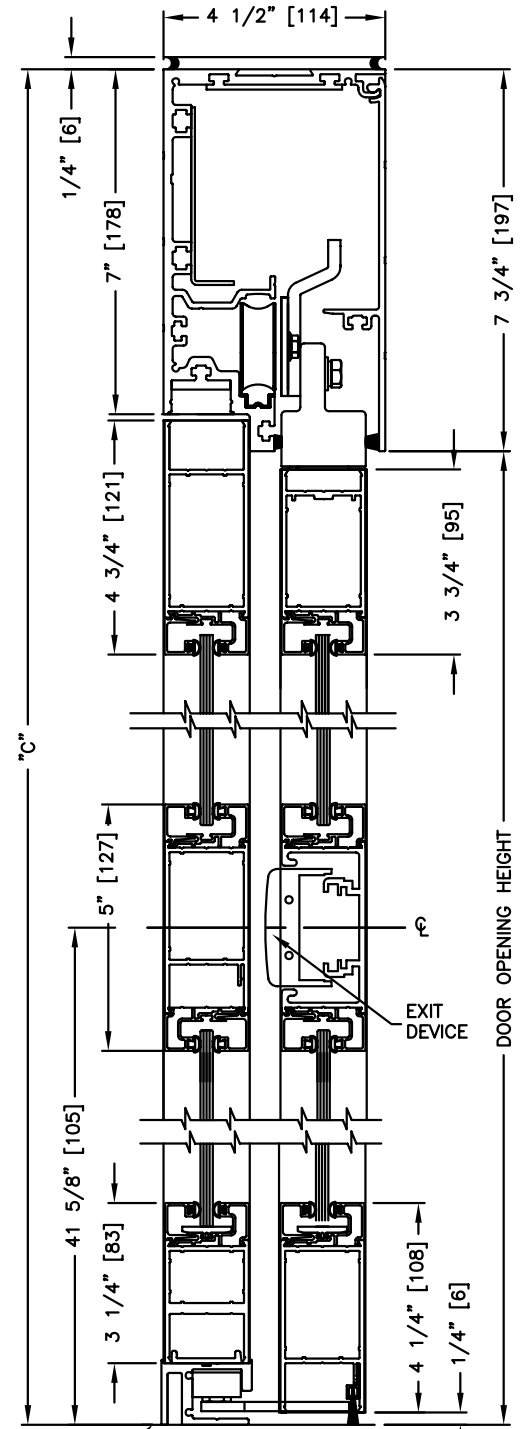
**PLAN VIEW**

SCALE: 1/4" = 1'0"



**SECTION: 1**

SCALE: 1/4" SIZE



**SECTION: 2**

SCALE: 1/4" SIZE

**NOTES:**

1. Security Package includes concealed vertical rod type exit devices on the sliding doors and fail secure electric lock in the header.
2. See sheets 51-2.86 thru 51-2.91 for optional muntins, bottom rails, transoms, glazing variations, bottom guides & thresholds.
3. See sheet 51-2.03 for package size details.