

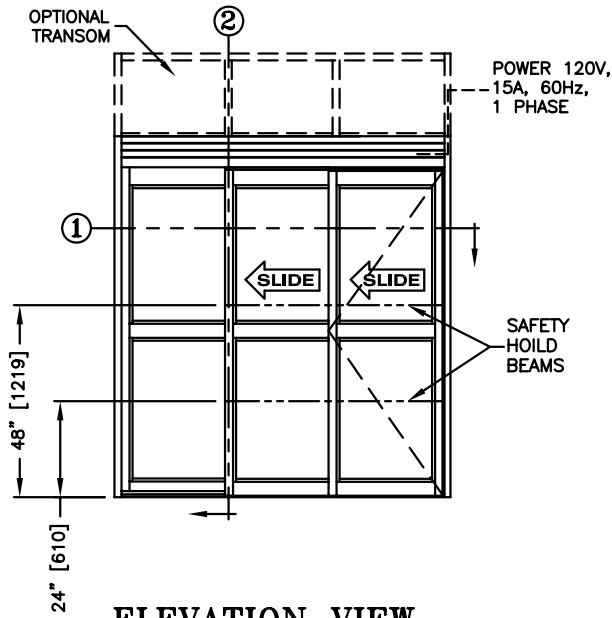


**record-usa**  
4910 STARCREST DR.  
MONROE, NC 28110  
(704) 289 - 9212

JOB NAME: \_\_\_\_\_  
LOCATION: \_\_\_\_\_

**SERIES 5100 AUTOMATIC SLIDING DOORS**

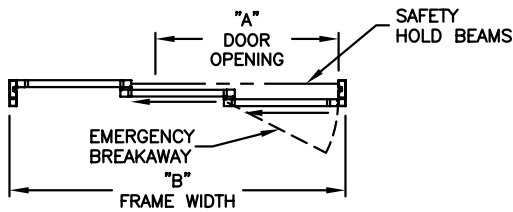
TYPE: 5119-1, 0-X-SX, L.H. TELESCOPE  
WITH SECURITY PACKAGE PAGE 51-2.36



**ELEVATION VIEW**

SCALE: 1/4" = 1'0"

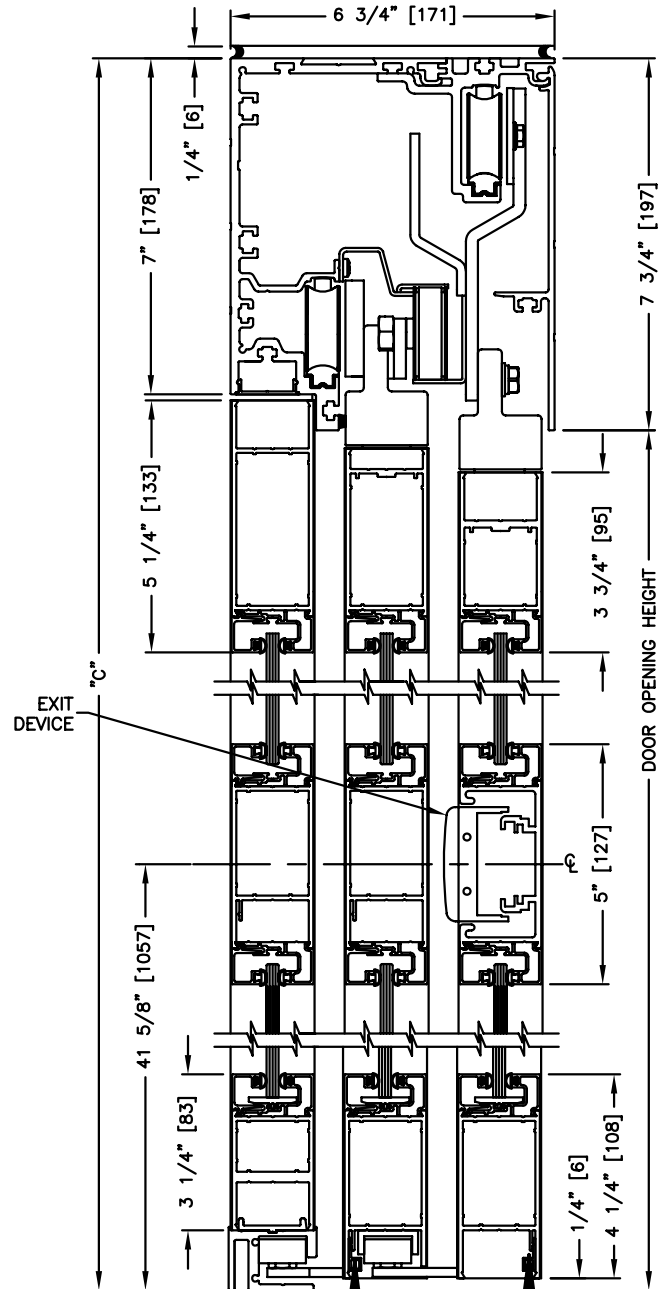
INTERIOR



**PLAN VIEW**

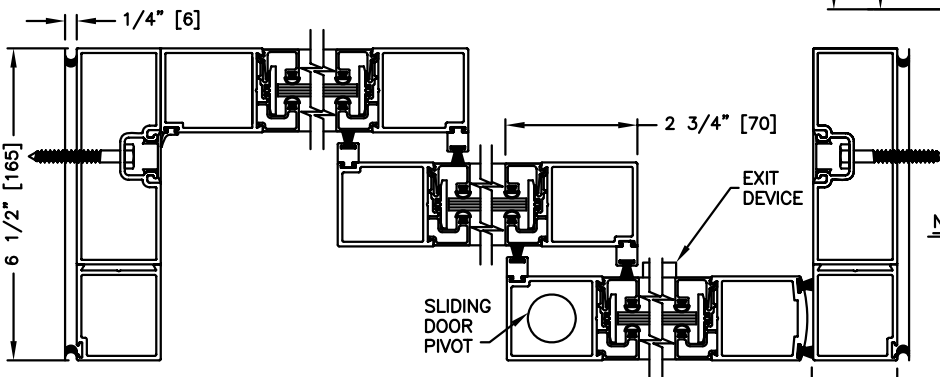
SCALE: 1/4" = 1'0"

EXTERIOR



**SECTION: 2**

SCALE: 1/4 SIZE



**SECTION: 1**

SCALE: 1/4 SIZE

NOTE: 1. See sheets 51-2.86 thru 51-2.91 for optional muntins, bottom rails, transoms, glazing variations, bottom guides & thresholds.

2. See sheets 51-2.19 for package size details.

\* FIXED PANEL HEIGHT SHOWN IS FOR UNITS W/O THRESHOLD. FOR UNITS W/THRESHOLD, FIXED PANEL HEIGHT IS 82-1/16" [2084].