



**record-usa**  
4910 STARCREST DR.  
MONROE, NC 28110  
(704) 289 - 9212

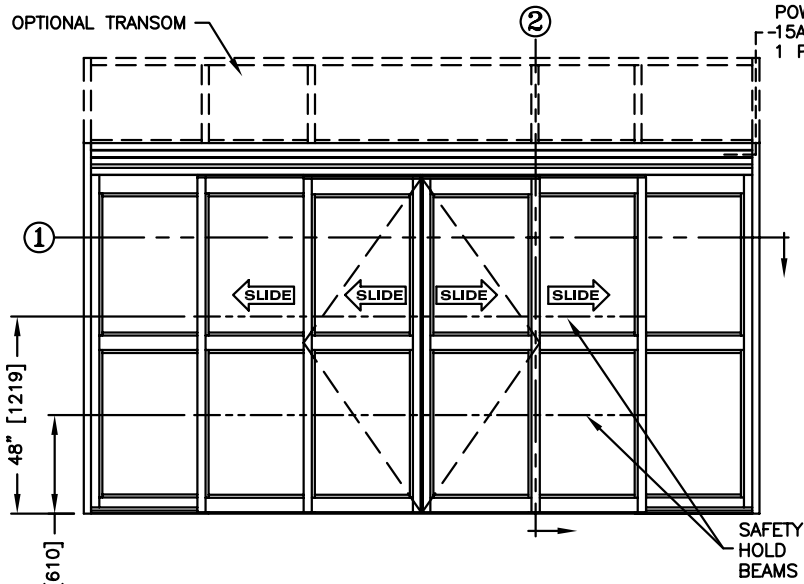
JOB NAME: \_\_\_\_\_

LOCATION: \_\_\_\_\_

**SERIES 5100 AUTOMATIC SLIDING DOORS**

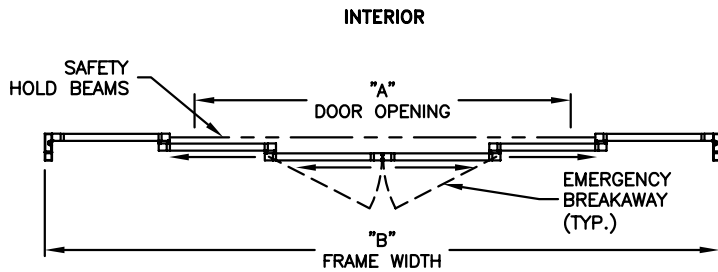
TYPE: 5121-1, 0-X-SX-SX-X-0,  
BI-PART TELESCOPE  
WITH SECURITY PACKAGE

PAGE 51-2.38



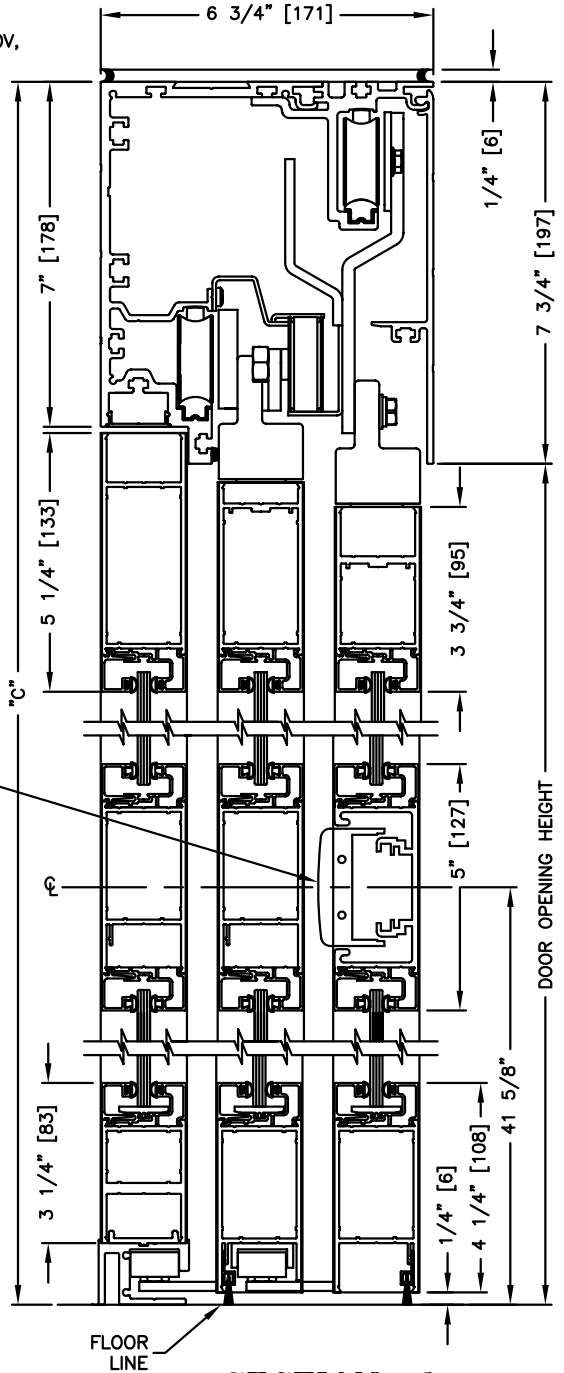
**ELEVATION VIEW**

SCALE: 1/4" = 1'0"



**PLAN VIEW**

SCALE: 1/4" = 1'0"



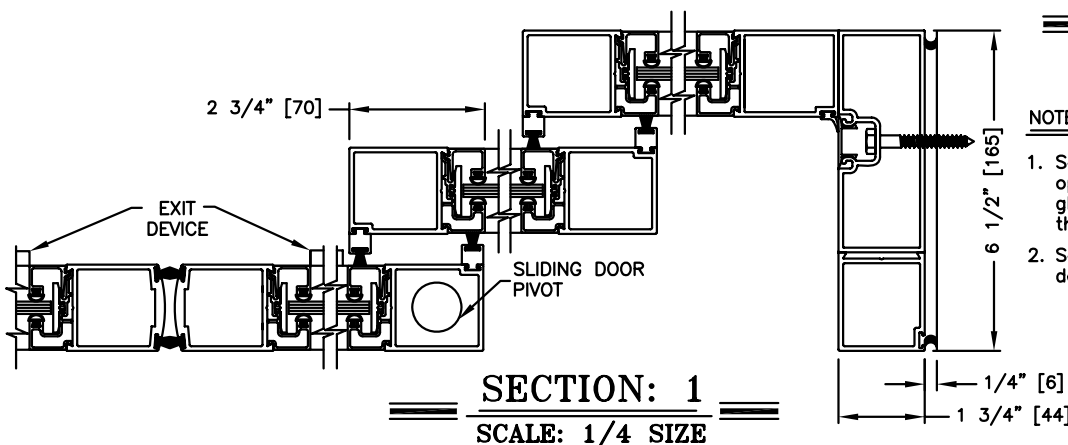
**SECTION: 2**

SCALE: 1/4 SIZE

**NOTES:**

1. See sheets 51-2.86 thru 51-2.91 for optional muntins, bottom rails, transoms, glazing variations, bottom guides & thresholds.
2. See sheets 51-2.21 for package size details.

\* FIXED PANEL HEIGHT SHOWN IS FOR UNITS W/O THRESHOLD. FOR UNITS W/THRESHOLD, FIXED PANEL HEIGHT IS 82-1/16" [2084].



**SECTION: 1**

SCALE: 1/4 SIZE