

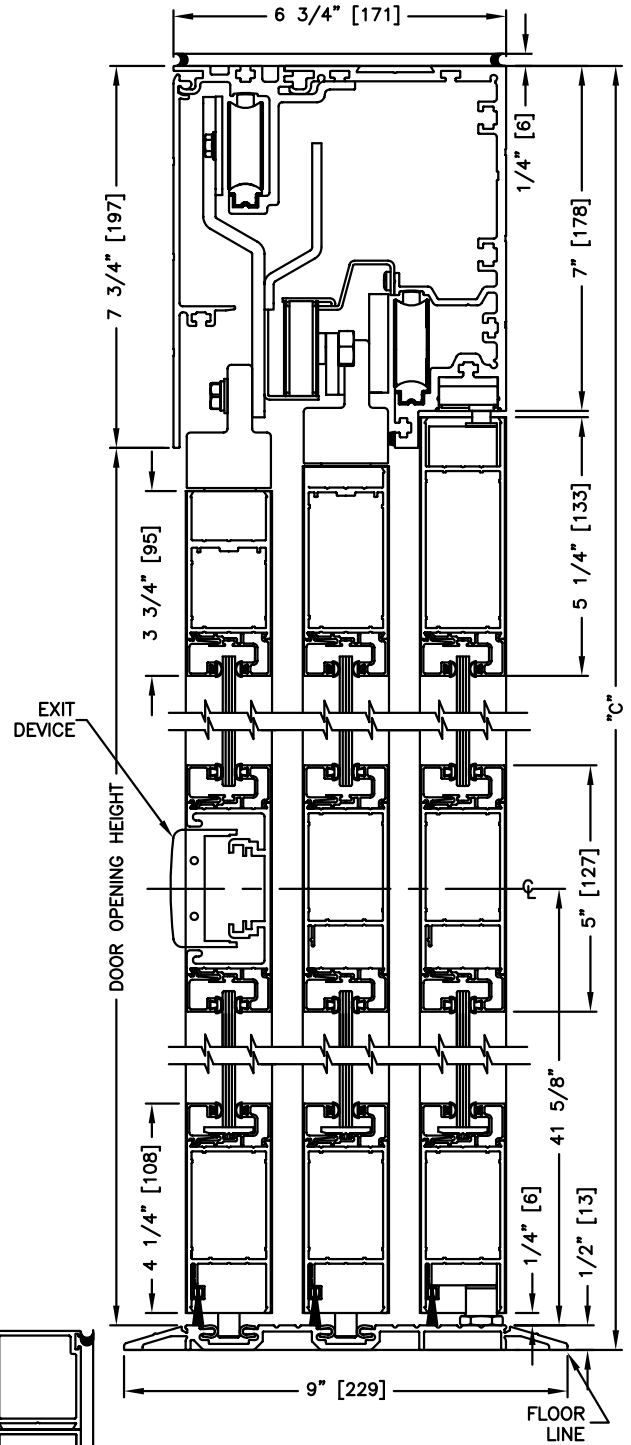
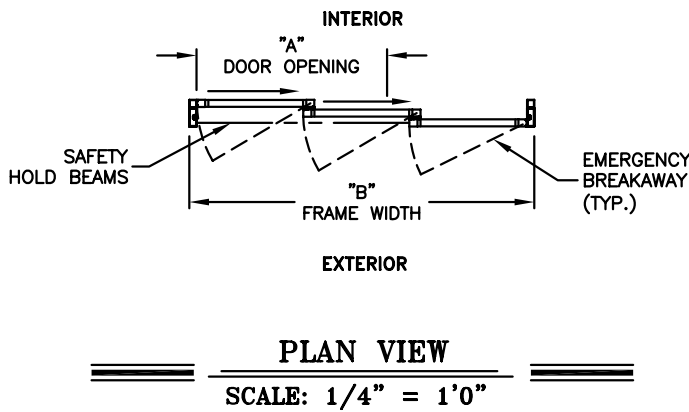
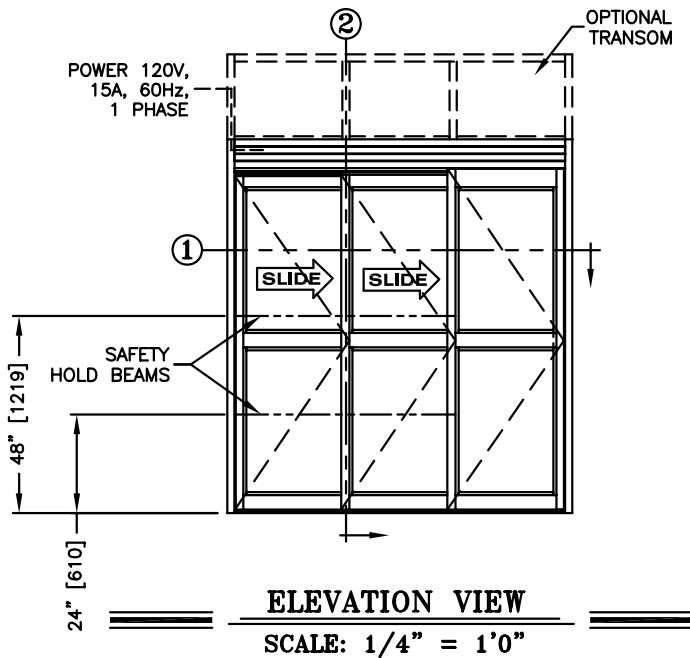


**record-usa**  
4910 STARCREST DR.  
MONROE, NC 28110  
(704) 289 - 9212

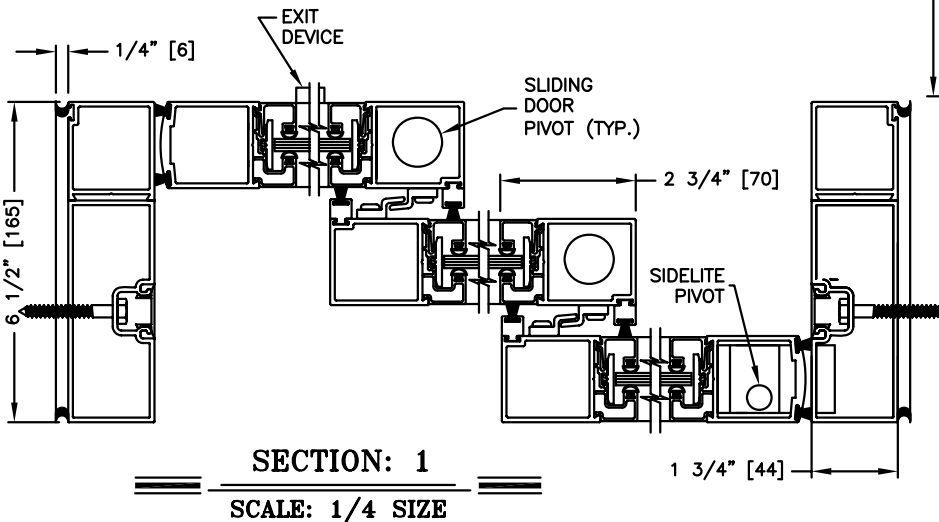
JOB NAME: \_\_\_\_\_  
LOCATION: \_\_\_\_\_

**SERIES 5100 AUTOMATIC SLIDING DOORS**

TYPE: 5123-1, SX-SX-S0, R.H. TELESCOPE  
WITH SECURITY PACKAGE PAGE 51-2.40



**SECTION: 2**  
SCALE: 1/4 SIZE



**NOTES:**

1. See sheets 51-2.86 thru 51-2.91 for optional muntins, bottom rails, transoms, glazing variations, bottom guides & thresholds.
2. See sheet 51-2.92 for additional details of recessed pin guide.
3. See sheet 51-2.23 for package size details.