

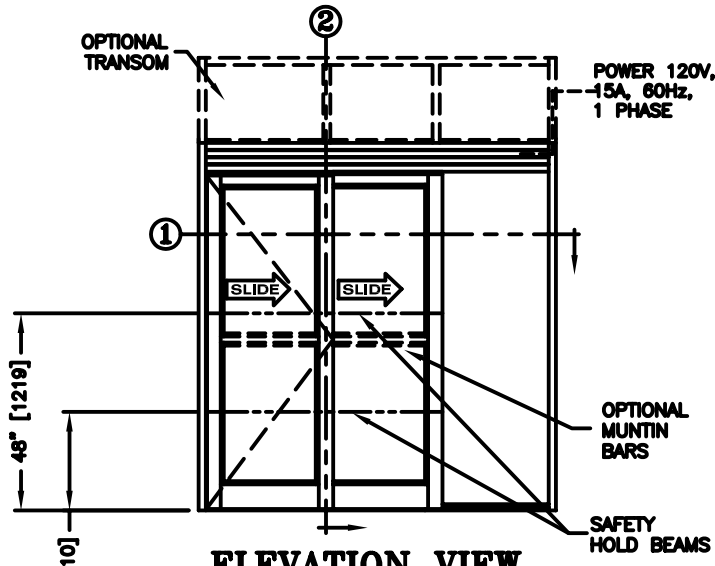


record-usa
4910 STARCREST DR.
MONROE, NC 28110
(704) 289 - 9212

JOB NAME: _____
LOCATION: _____

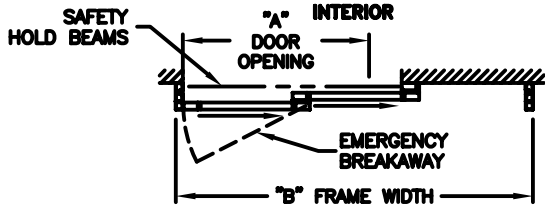
SERIES 5100 AUTOMATIC SLIDING DOORS

TYPE: 5126-2, SX-X-P, R.H. TELESCOPE
MEDIUM STILE
PAGE 51-2.67



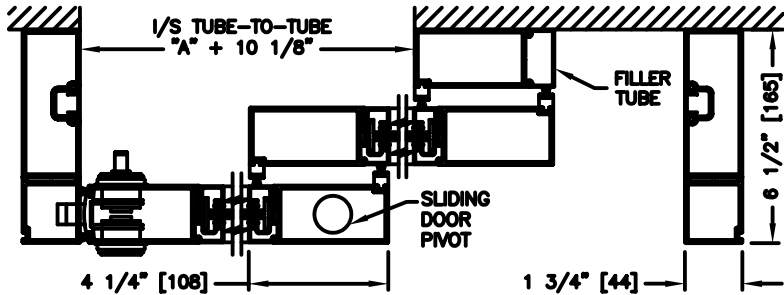
ELEVATION VIEW

SCALE: 1/4" = 1'0"



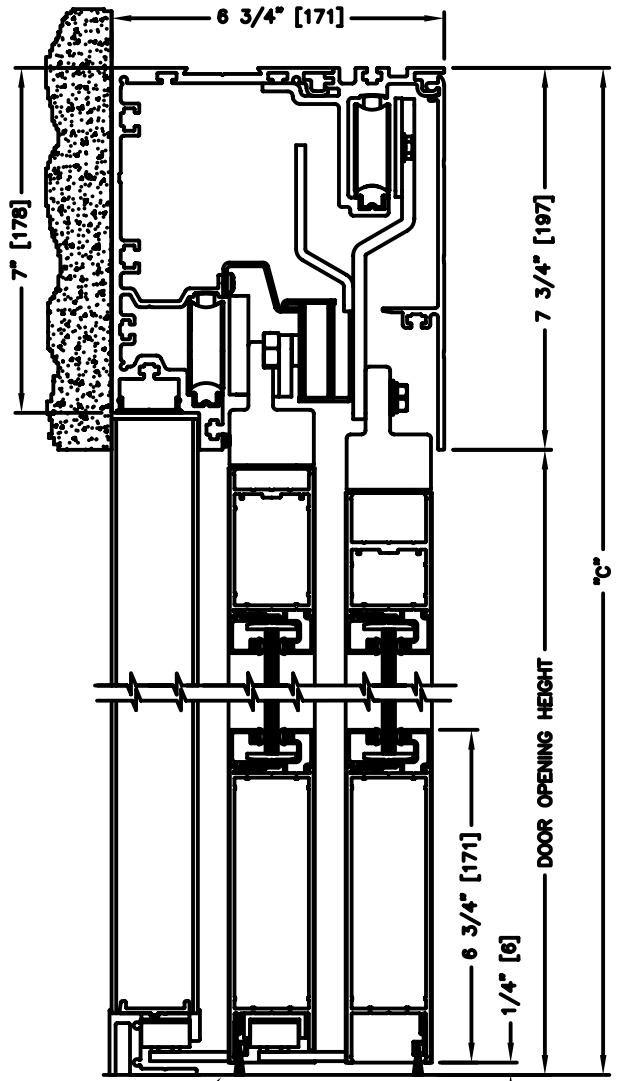
PLAN VIEW

SCALE: 1/4" = 1'0"



SECTION: 1

SCALE: 1/2" = 1'0"



SECTION: 2

SCALE: 1/4" SIZE

NOTE:

See sheets 51-2.86 thru 51-2.91 for optional muntins, bottom rails, transoms, glazing variations, bottom guides & thresholds.

DIMENSIONS FOR STANDARD MEDIUM STILE PACKAGES

DOOR OPENING "A"	STD. PACKAGE WIDTH "B"	STD. PACKAGE HEIGHT "C" W OR W/O THRESHOLD	DOOR OPENING HEIGHT W/ THRESHOLD	DOOR OPENING HEIGHT W/O THRESHOLD	MAX. OPENING MANUALLY	I/S TUBE-TO-TUBE
40-3/4 (1035)	84 (2134)	91 (2311)	82-3/4 (2102)	83-1/4 (2115)	45-13/16 (1164)	50-7/8 (1292)
48-3/4 (1238)	96 (2438)	91 (2311)	82-3/4 (2102)	83-1/4 (2115)	53-13/16 (1367)	58-7/8 (1495)
56-3/4 (1441)	108 (2743)	91 (2311)	82-3/4 (2102)	83-1/4 (2115)	61-13/16 (1570)	66-7/8 (1699)
64-3/4 (1645)	120 (3048)	91 (2311)	82-3/4 (2102)	83-1/4 (2115)	69-13/16 (1773)	74-7/8 (1902)
80-3/4 (2051)	144 (3658)	91 (2311)	82-3/4 (2102)	83-1/4 (2115)	85-13/16 (2180)	90-7/8 (2308)

Masonry Opening is 1/4" (6) per side larger and 1/4" taller than package dimensions.
Measurements given in inches (millimeters).