



record-usa
4910 STARCREST DR.
MONROE, NC 28110
(704) 289 - 9212

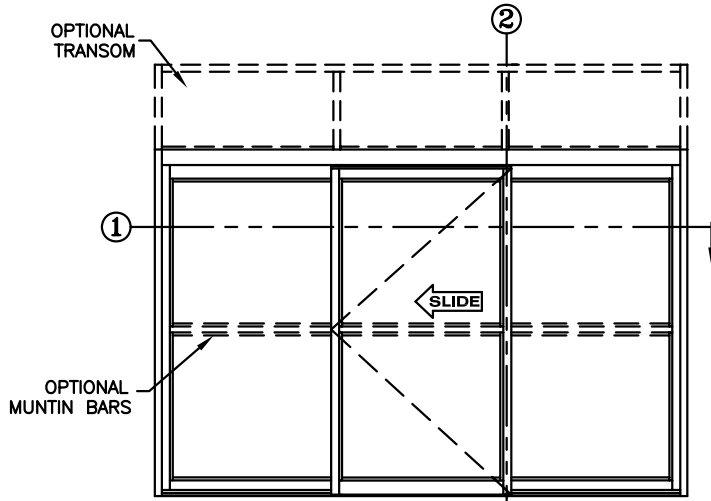
JOB NAME: _____

LOCATION: _____

5900 SERIES MANUAL SLIDING DOORS

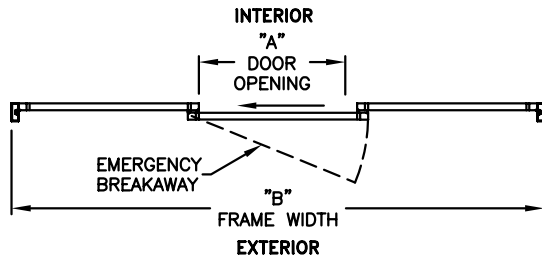
TYPE: 5928-1, 0-SX-0, 3-PANEL
W/CENTER SLIDE LH

PAGE 59-2.13



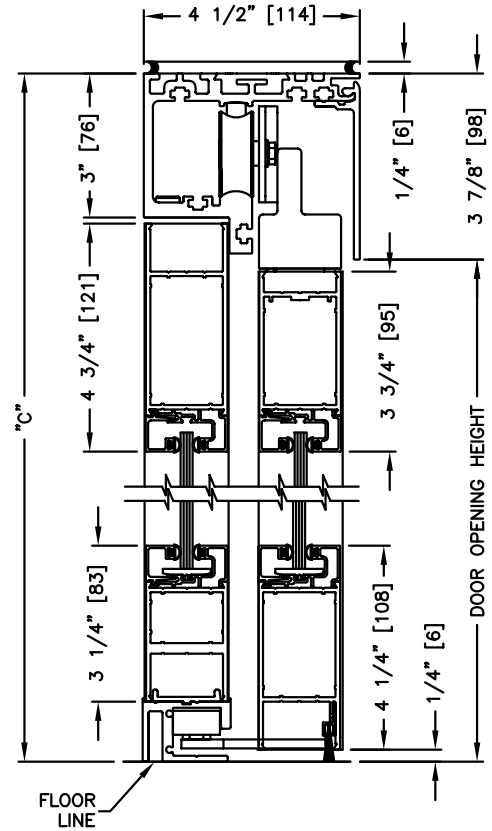
ELEVATION VIEW

SCALE: 1/4" = 1'0"



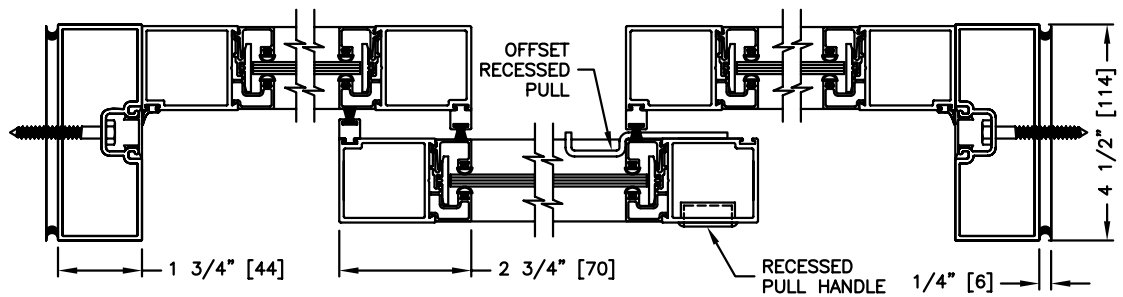
PLAN VIEW

SCALE: 1/4" = 1'0"



SECTION: 2

SCALE: 1/4 SIZE



SECTION: 1

SCALE: 1/4 SIZE

NOTE:

See sheets 59-2.39 thru 59-2.45 for optional muntins, bottom rails, transoms, glazing variations, bottom guides & thresholds.

DIMENSIONS FOR STANDARD NARROW STILE PACKAGES

| DOOR OPENING "A" | STD. PACKAGE WIDTH "B" | STD. PACKAGE HEIGHT "C" | DOOR OPENING HEIGHT | MAX. OPENING MANUALLY |
|------------------|------------------------|-------------------------|---------------------|-----------------------|
| 36 (914) | 133-1/8 (3381) | 87 (2210) | 83-1/8 (2111) | 39-1/2 (1003) |
| 42 (1067) | 151-1/8 (3839) | 87 (2210) | 83-1/8 (2111) | 45-1/2 (1156) |
| 48 (1219) | 169-1/8 (4296) | 87 (2210) | 83-1/8 (2111) | 51-1/2 (1308) |

Masonry Opening is 1/4" (6) per side larger and 1/4" taller than package dimensions.
Measurements given in inches (millimeters).