



record-usa
4910 STARCREST DR.
MONROE, NC 28110
(704) 289 - 9212

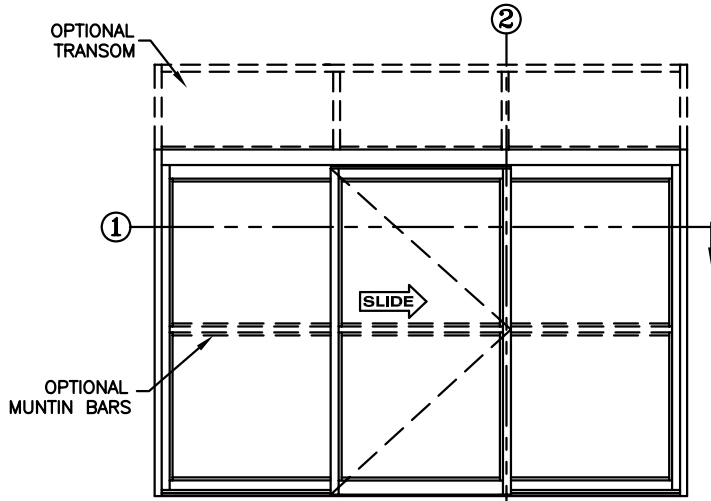
JOB NAME: _____

LOCATION: _____

5900 SERIES MANUAL SLIDING DOORS

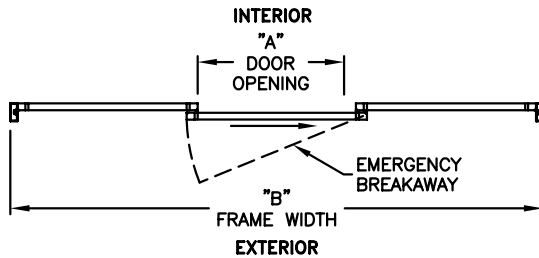
TYPE: 5929-1, 0-SX-0, 3-PANEL
W/CENTER SLIDE RH

PAGE 59-2.14



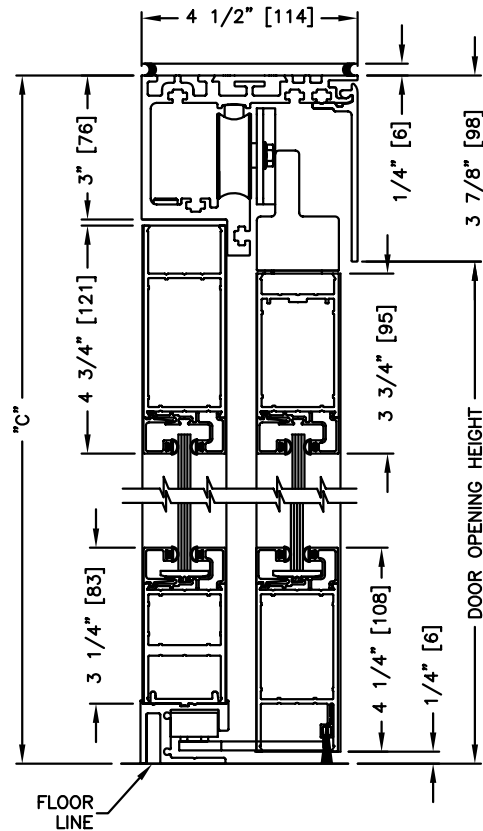
ELEVATION VIEW

SCALE: 1/4" = 1'0"



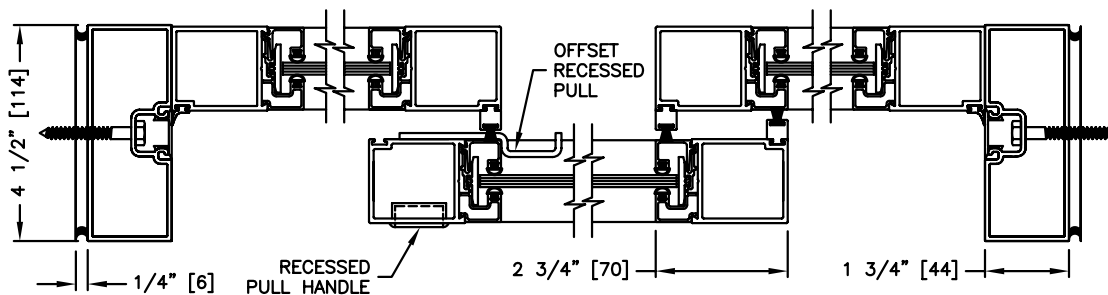
PLAN VIEW

SCALE: 1/4" = 1'0"



SECTION: 2

SCALE: 1/4" SIZE



SECTION: 1

SCALE: 1/4" SIZE

NOTE:

See sheets 59-2.39 thru 59-2.45 for optional muntins, bottom rails, transoms, glazing variations, bottom guides & thresholds.

DIMENSIONS FOR STANDARD NARROW STILE PACKAGES

DOOR OPENING "A"	STD. PACKAGE WIDTH "B"	STD. PACKAGE HEIGHT "C"	DOOR OPENING HEIGHT	MAX. OPENING MANUALLY
36 (914)	133-1/8 (3381)	87 (2210)	83-1/8 (2111)	39-1/2 (1003)
42 (1067)	151-1/8 (3839)	87 (2210)	83-1/8 (2111)	45-1/2 (1156)
48 (1219)	169-1/8 (4296)	87 (2210)	83-1/8 (2111)	51-1/2 (1308)

Masonry Opening is 1/4" (6) per side larger and 1/4" taller than package dimensions.
Measurements given in inches (millimeters).