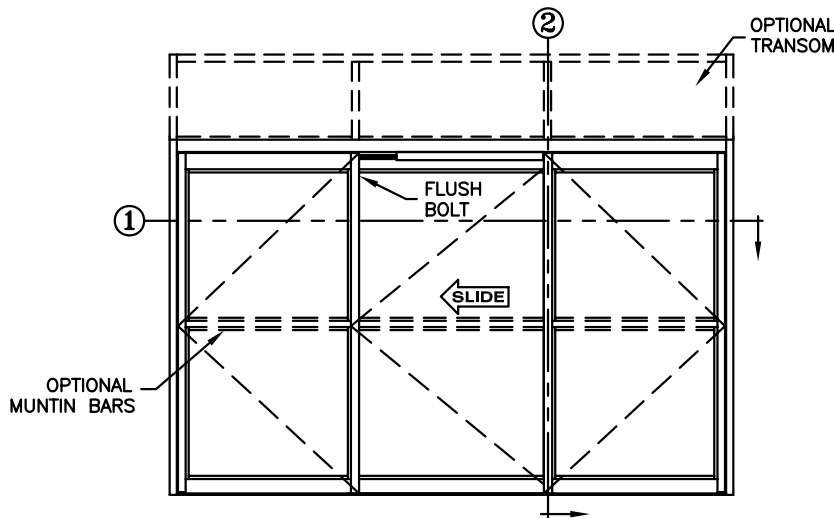




**record-usa**  
4910 STARCREST DR.  
MONROE, NC 28110  
(704) 289 - 9212

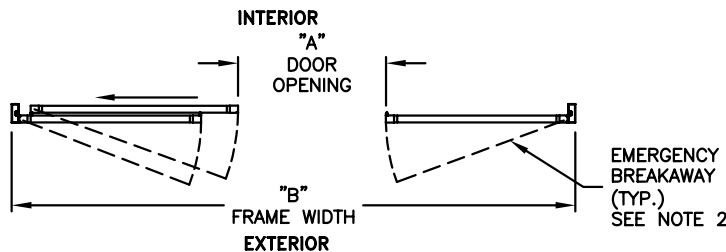
JOB NAME: \_\_\_\_\_  
LOCATION: \_\_\_\_\_

TYPE: 5930-1, SO-SX-SO, 3-PANEL  
W/CENTER SLIDE LH  
TRACKLESS BOTTOM GUIDE



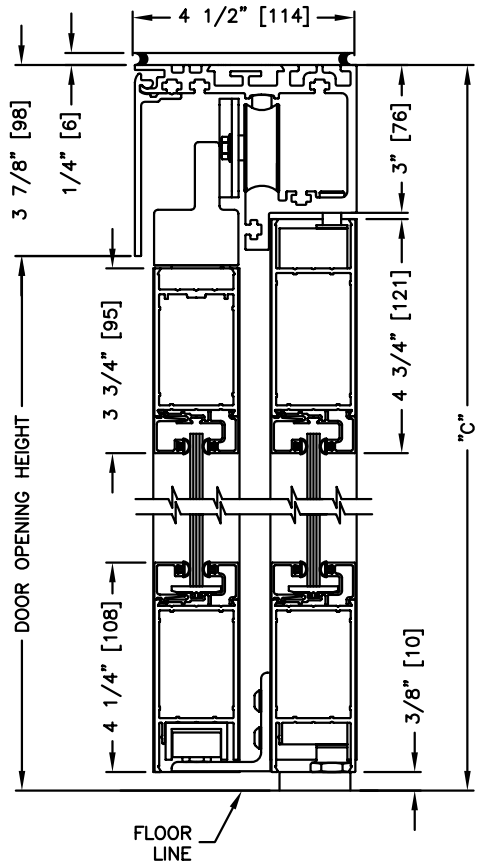
**ELEVATION VIEW**

SCALE: 1/4" = 1'0"



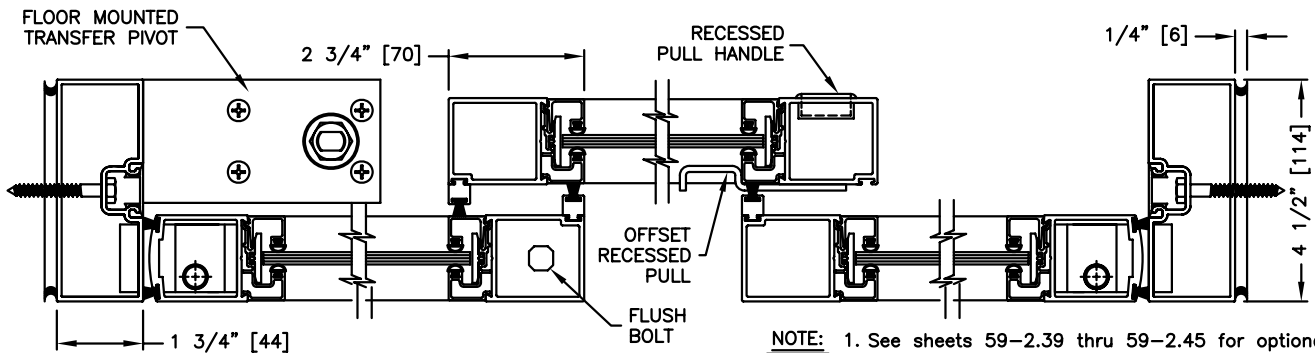
**PLAN VIEW**

SCALE: 1/4" = 1'0"



**SECTION: 2**

SCALE: 1/4 SIZE



**SECTION: 1**

SCALE: 1/4 SIZE

- NOTE:**
1. See sheets 59-2.39 thru 59-2.45 for optional muntins, bottom rails, transoms, glazing variations, bottom guides & thresholds.
  2. Panels breakaway only when sliding door is fully open and flush bolt at the top of the "SO" panel is released.

**DIMENSIONS FOR STANDARD NARROW STILE PACKAGES**

DOOR OPENING "A"	STD. PACKAGE WIDTH "B"	STD. PACKAGE HEIGHT "C"	DOOR OPENING HEIGHT	MAX. OPENING MANUALLY
36 (914)	137-1/4 (3486)	87 (2210)	82 (2083)	126-3/4 (3219)
42 (1067)	155-1/4 (3943)	87 (2210)	82 (2083)	126-3/4 (3219)
48 (1219)	173-1/4 (4401)	87 (2210)	82 (2083)	162-3/4 (4134)

Masonry Opening is 1/4" (6) per side larger and 1/4" taller than package dimensions.  
Measurements given in inches (millimeters).