



record-usa
4910 STARGREST DR.
MONROE, NC 28110
(704) 289 - 9212

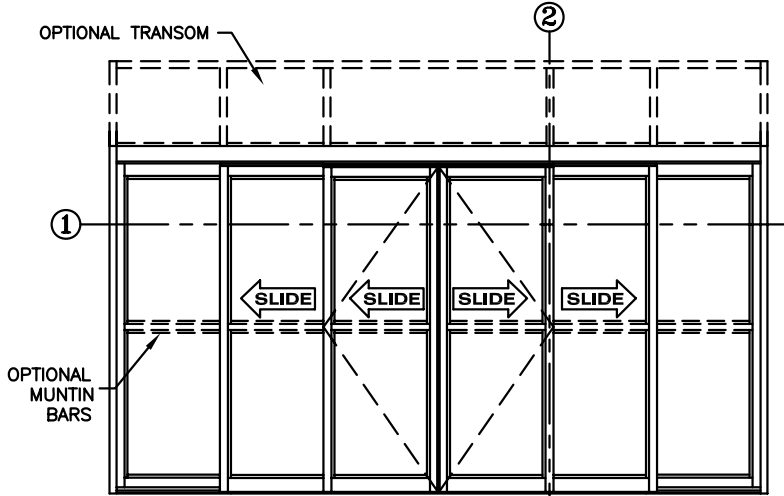
JOB NAME: _____

LOCATION: _____

5900 SERIES MANUAL SLIDING DOORS

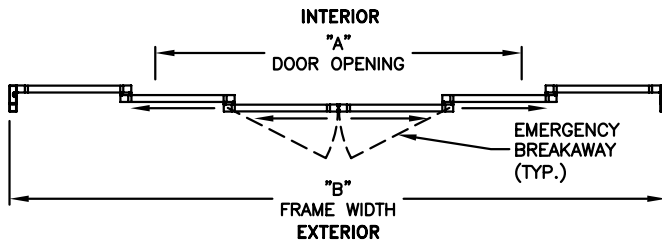
TYPE: 5921-1, 0-X-SX-SX-X-0,
BI-PART TELESCOPE

PAGE 59-2.23



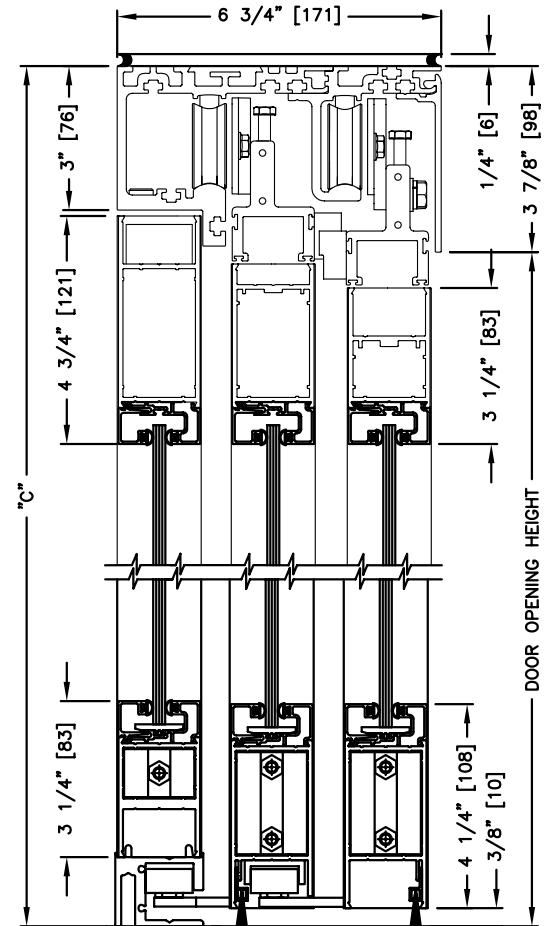
ELEVATION VIEW

SCALE: 1/4" = 1'0"



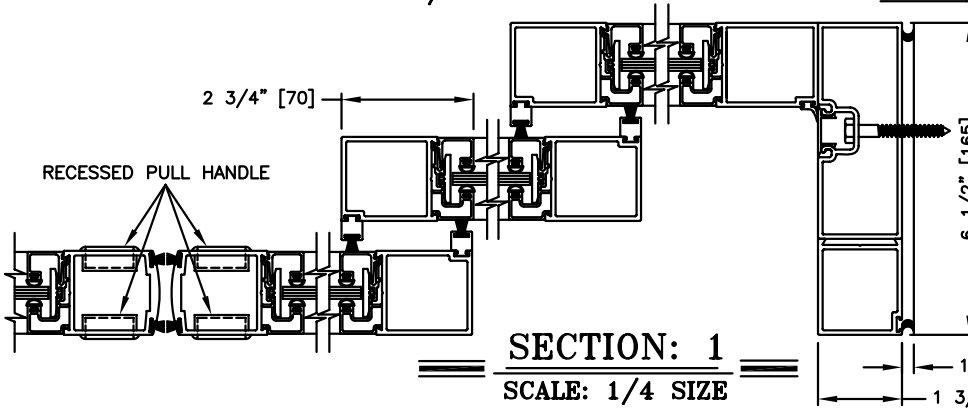
PLAN VIEW

SCALE: 1/4" = 1'0"



SECTION: 2

SCALE: 1/4 SIZE



SECTION: 1

SCALE: 1/4 SIZE

NOTE:

See sheets 59-2.39 thru 59-2.45 for optional muntins, bottom rails, transoms, glazing variations, bottom guides & thresholds.

DIMENSIONS FOR STANDARD NARROW STILE PACKAGES

| DOOR OPENING "A" | STD. PACKAGE WIDTH "B" | STD. PACKAGE HEIGHT "C" | DOOR OPENING HEIGHT | MAX. OPENING MANUALLY |
|------------------|------------------------|-------------------------|---------------------|-----------------------|
| 43-3/4 (1111) | 96 (2438) | 87 (2210) | 83-1/8 (2111) | 50-7/8 (1292) |
| 51-3/4 (1314) | 108 (2743) | 87 (2210) | 83-1/8 (2111) | 58-7/8 (1495) |
| 59-3/4 (1518) | 120 (3048) | 87 (2210) | 83-1/8 (2111) | 66-7/8 (1699) |
| 75-3/4 (1924) | 144 (3658) | 87 (2210) | 83-1/8 (2111) | 82-7/8 (2105) |
| 91-3/4 (2330) | 168 (4267) | 87 (2210) | 83-1/8 (2111) | 98-7/8 (2511) |

Masonry Opening is 1/4" (6) per side larger and 1/4" taller than package dimensions.
Measurements given in inches (millimeters).