



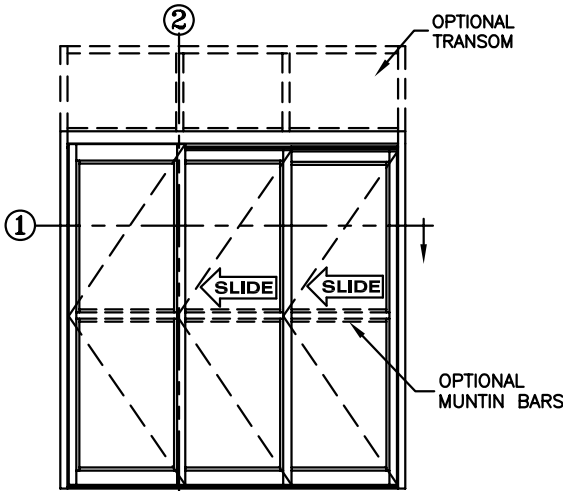
**record-usa**  
4910 STARCREST DR.  
MONROE, NC 28110  
(704) 289 - 9212

JOB NAME: \_\_\_\_\_

LOCATION: \_\_\_\_\_

**5900 SERIES MANUAL SLIDING DOORS**

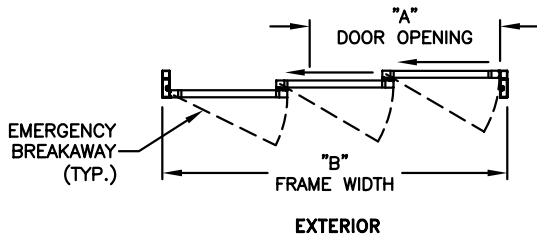
TYPE: 5922-1, S0-SX-SX, L.H. TELESCOPE  
RECESSED PIN GUIDE



**ELEVATION VIEW**

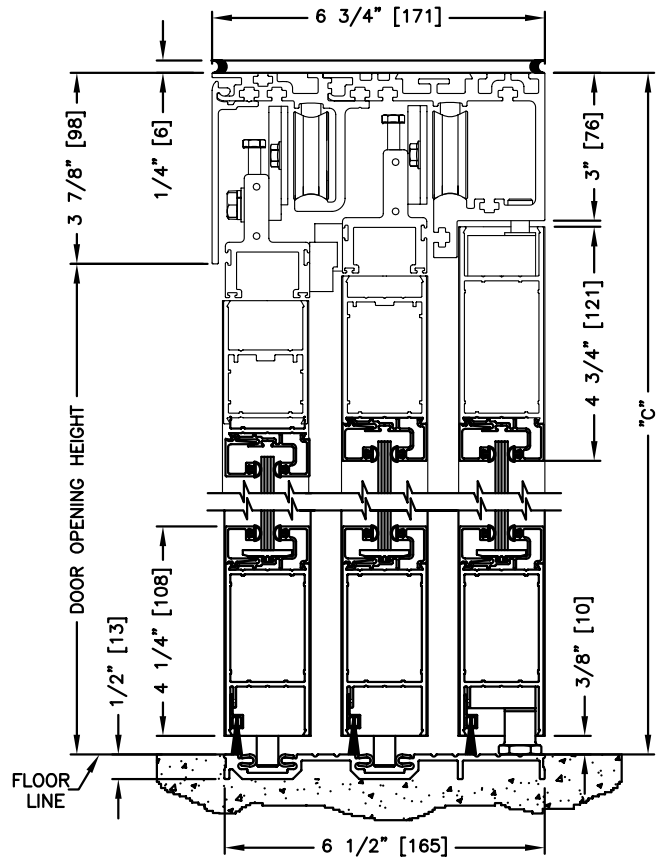
SCALE: 1/4" = 1'0"

INTERIOR



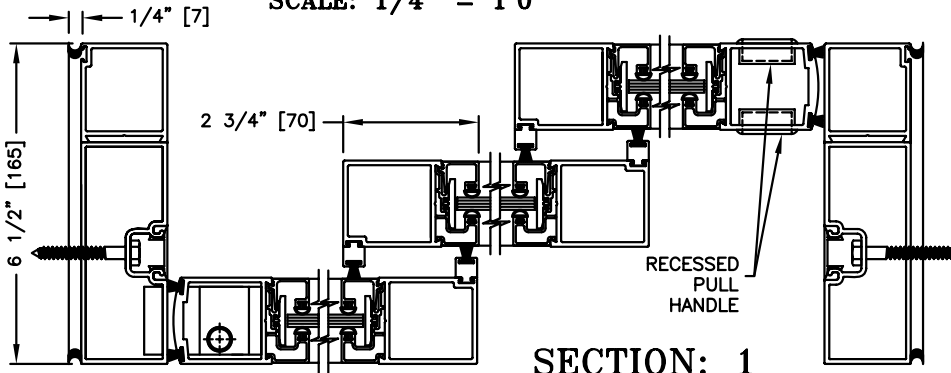
**PLAN VIEW**

SCALE: 1/4" = 1'0"



**SECTION: 2**

SCALE: 1/4 SIZE



**SECTION: 1**

SCALE: 1/4 SIZE

**NOTE:**

1. 9See sheets 51-2.39 thru 59-2.45 for optional muntins, bottom rails, transoms, glazing variations, bottom guides & thresholds.

**DIMENSIONS FOR STANDARD NARROW STILE PACKAGES**

DOOR OPENING "A"	STD. PACKAGE WIDTH "B"	STD. PACKAGE HEIGHT "C"	DOOR OPENING HEIGHT	MAX. OPENING MANUALLY
44-3/4 (1137)	84 (2134)	87 (2210)	83-1/8 (2111)	71-1/2 (1816)
52-3/4 (1340)	96 (2438)	87 (2210)	83-1/8 (2111)	83-1/2 (2121)
60-3/4 (1543)	108 (2743)	87 (2210)	83-1/8 (2111)	95-1/2 (2426)
68-3/4 (1746)	120 (3048)	87 (2210)	83-1/8 (2111)	107-1/2 (2731)
84-3/4 (2153)	144 (3658)	87 (2210)	83-1/8 (2111)	131-1/2 (3340)

Masonry Opening is 1/4" (6) per side larger and 1/4" taller than package dimensions.  
Measurements given in inches (millimeters).