



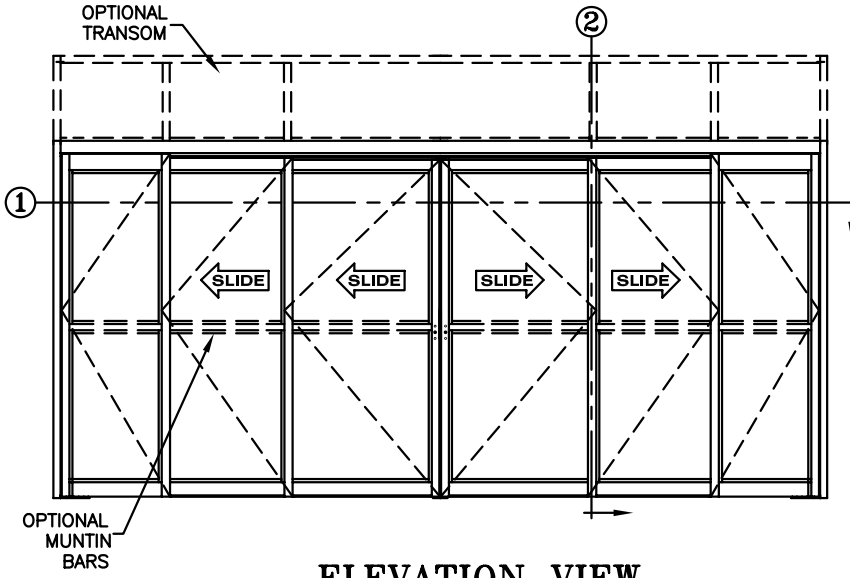
record-usa
4910 STARCREST DR.
MONROE, NC 28110
(704) 289 - 9212

JOB NAME: _____

LOCATION: _____

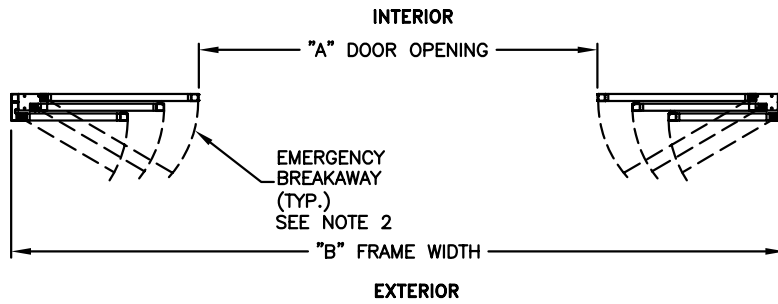
5900 SERIES MANUAL SLIDING DOORS

TYPE: 5924-1, SO-SX-SX-SX-SX-SO, BI-PART TELESCOPE
TRACKLESS BOTTOM GUIDE
PAGE 59-2.29



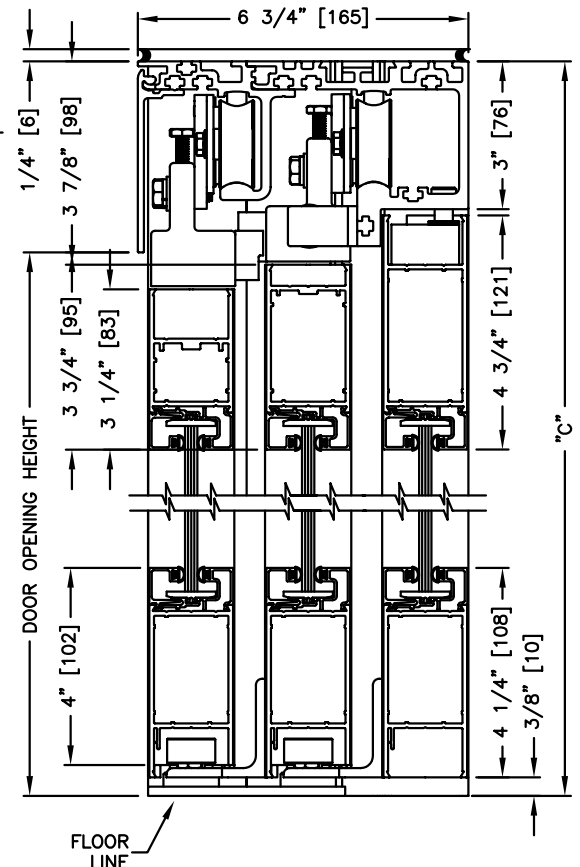
ELEVATION VIEW

SCALE: 1/4" = 1'0"



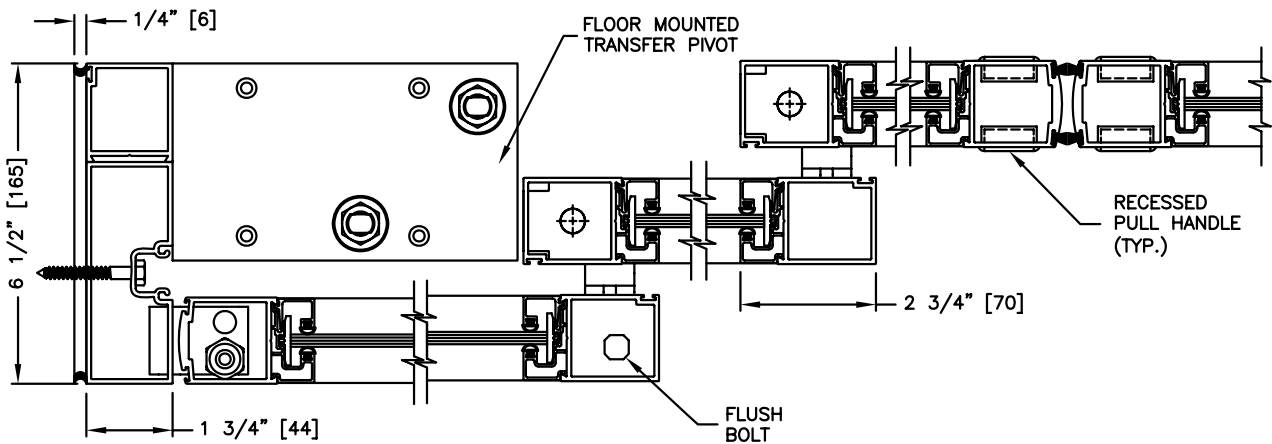
PLAN VIEW

SCALE: 1/4" = 1'0"



SECTION: 2

SCALE: 1/4 SIZE



SECTION: 1

SCALE: 1/4 SIZE

- NOTE:**
1. See sheets 59-2.39 thru 59-2.45 for optional muntins, bottom rails, transoms, glazing variations, bottom guides & thresholds.
 2. Panels breakaway only when sliding door is fully open and flush bolt at the top of the "SO" panel is released.