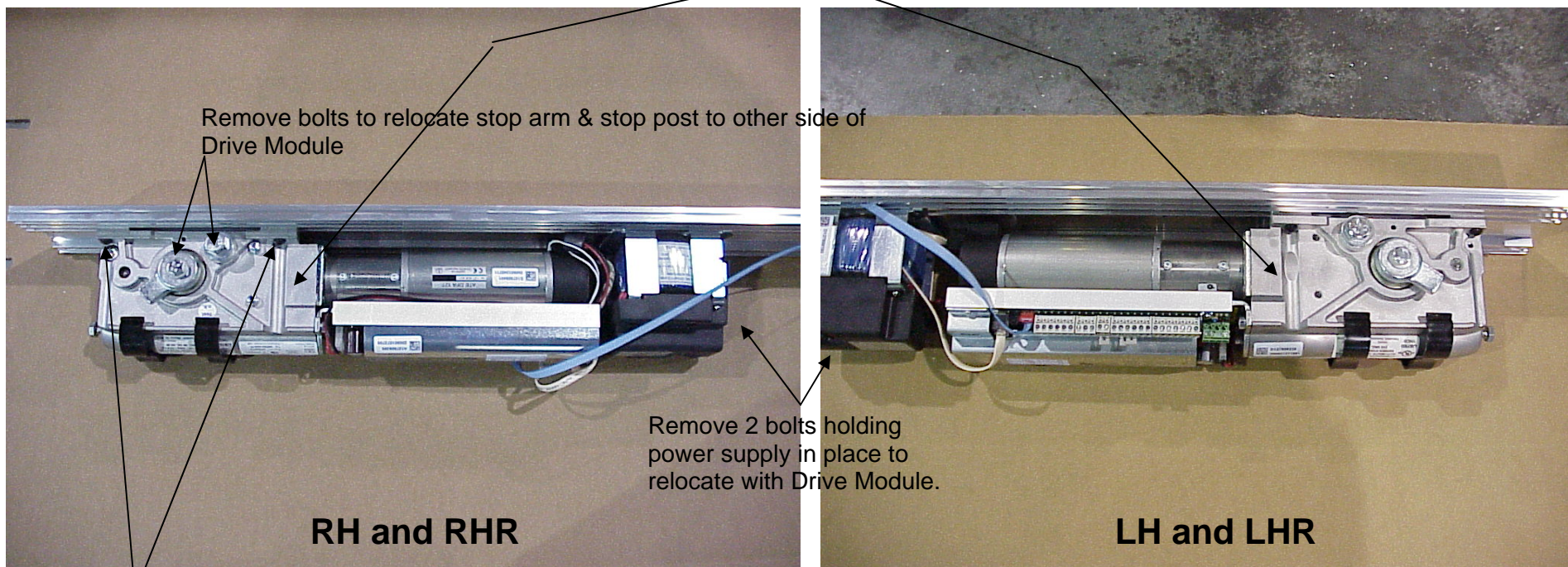


Flip Drive Module over from one end to other end of back plate



Remove 4 bolts to remove Drive Module to turn it over and mount at other end of back plate for hand change. Locate pinion on center at 5 1/2"

The Cover will be prepped both sides to accommodate a hand change.

Note: Once unit mechanically installed, door will open easy & close controlled, if not move **S1** Slide Switch on Control for proper rotation.

